



# Community Consultation 2022-2023

## Overview

Over the last few months we have conducted an extensive community consultation, to seek feedback on the community's views about issues of importance to them in Sunart.

A total of 158 people returned a survey organised jointly by Sunart Community Company and Sunart Community Council aiming to understand what worries, concerns and hopes people had for the future.

The purpose of this consultation was to follow on from our 2016 community consultation, to better inform decisions about current and future community projects.

The feedback from 2016 has allowed us to compare our recent results to see whether what were considered priorities then are still considered priorities now. The feedback remains similar in places, with the main concerns still revolving around housing, and transport. New issues of importance to the community included food sharing initiatives (to help with the cost of living), increasing the number of social events, and access to health care.

## Engagement Process

**Stage 1 – November - January:** A community consultation survey was available online via type form, and was also printed and distributed to 240 households by hand. This was promoted via social media, email marketing, and printed posters and letters.



*Figure 1 - Community Council and Company volunteers envelope stuffing in advance of posting survey by hand*

**Stage 2 - March:** Due to a lower representation of young people who submitted the survey, we developed a shorter survey and distributed this to Ardnamurchan High School pupils, holding talks during school assemblies, and lunchtime engagement sessions encouraging young people to share their views about what is important to them.

**Stage 3 – March & April:** We also organised 4 focus events in Strontian Hall, based on topics of importance highlighted during the Stage 1 survey, to gain further views, and volunteers for future projects, and a mailing list of people interested in these topics who may be willing to contribute to relevant projects. The events included: *Food Sharing Initiatives, Sunart Paths, Social Events, and Car Sharing Schemes*. 4 Zoom meetings were organised to give members of the community who were unable to attend an in-person meeting, the opportunity to comment on the above topics, and the opportunity to sign up to volunteer for any future projects relating to these topics.

## What does Sunart think?

### Overview

#### Stage 1- Survey

The survey showed overwhelming support for the community buyout of Longrigg Woodland and also the Strontian Parish Church building.

A large number of responders commented on the need for more affordable housing for younger families, while housing for care workers, teachers and NHS professionals was also a concern. The top community concerns include access to healthcare, the cost and future of the ferry service, high transport and fuel costs, household energy bills.

People also expressed concerns about long-term provision of care for older people in the community, access to good broadband and lack of public transport.

There also appears to be majority support for developing a new social space for the village when the village hall can no longer be kept open. Almost 77 per cent of responders agreed with the concept of putting a permanent building on the show field. For more detailed responses, see [Appendix 1 \(pages 5-20\)](#)

#### Stage 2- Survey for young people

58 young people completed the short survey (18 of these were from the Sunart area).

Many of those surveyed listed the scenery and friendly people as their favourite things about the area, the weather, transport and lack of social spaces and things they dislike about the area. Concerns for the future of the area including housing, lack of opportunities and jobs for young people. When asked what strontian needs, many young people stated improved parks and social spaces, more social events, and shops. For more detailed responses, see [Appendix 1 \(pages 21-23\)](#)

#### Stage 3- In person events and Zoom:

57 people attended the in-person events. 3 people attended Zoom events – 2 for car sharing and 1 for paths.

#### Sunart Paths:

In partnership with Highlife Highland, we organised a walk along one of Sunart's community paths, led by Lochaber Countryside Ranger Eilidh-Ann Phillips. Attendees then returned to Strontian village hall for tea and cake, and the opportunity to complete a brief form highlighting their views about immediate restoration priorities for Sunart Paths, and ideas about plans for the future, if funding were to become available for larger scale upgrades to paths, or even the installation of new paths. 15 people attended both zoom and in person events overall, with 12 people expressing an interest in joining a Sunart Paths Group, to volunteer their time and help Sunart Community Company, Council and Lochaber Countryside Rangers, begin to plan some footpath restoration, and places to situate benches built by the Men's Shed.

Suggestions included: bridge on Faeries Road reinstated, replacing signage, placing benches in the community woodlands, and clearing the path to Ardnastaing beach. Please see [Appendix 1 \(pages 25-26\)](#) to view the comments in full.



*Figure 2 - Paths event attendees before and during walk in community woodlands*



*Figure 3 - consultation following paths walk*

**Sunart Social Events:** We organised an evening event in the village hall, with food provided by local business The Bothy Bar, with the opportunity to share thoughts on large sheets of paper via a spider diagram, about events we should hold in the Sunart Community. 21 people attended, and 10 people offered to volunteer to help organise social events, or to help at the events themselves.

Potential event ideas included Ceilidhs, music events, cinema nights, tennis club, street parties, craft groups, and many more. Please see [appendix 1 \(pages 26-28\)](#) to view suggestions in full.







Figure 4 - Photos from Sunart Social Events consultation

**Sunart Food Sharing:** We organised an evening event in Strontian Village Hall, with hot food (made with locally sourced, seasonal ingredients), provided by Ariundle Centre. A representative from Lochaber Environmental Group attended to give a presentation on the impacts of food waste, and benefits of food sharing schemes such as community fridges and pantries. 18 people attended overall, with 2 people offering to help organise food sharing schemes. When asked what they would like to see happen locally, potential food sharing initiatives suggested by attendees included a community fridge, pantry, food swap and share, and more food grown in polytunnels and community gardens. See Appendix 1 (pages 29-30) to view suggestions in full.

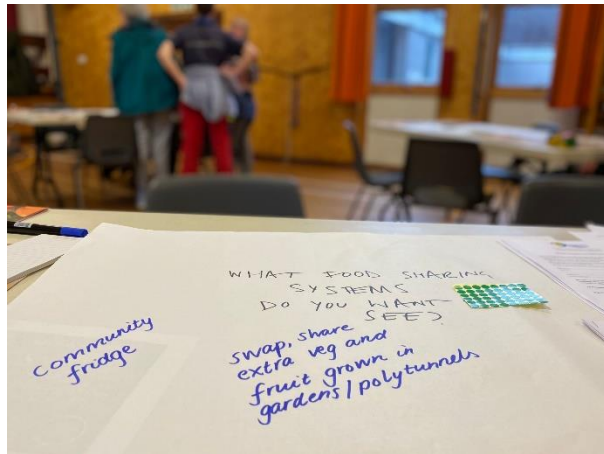


Figure 5 - Photos taken during Food Sharing Initiative Consultation

**Sunart Car Share:** We organised a zoom meeting, and an event hosted in Strontian Village Hall by Sunart Community Company, in partnership with Urram. Urram recently received funding to purchase an electric car, which could be used in a car-share scheme locally to Strontian, to reduce cost of living, and Sunart's carbon footprint. 6 people attended this meeting and the zoom meeting. Overall, attendees were highly interested in such a scheme, and had suggestions about being able to use the car share scheme for longer term use (such as a trip away for the week or weekend), in addition to daily use for shopping trips, work commutes, etc.

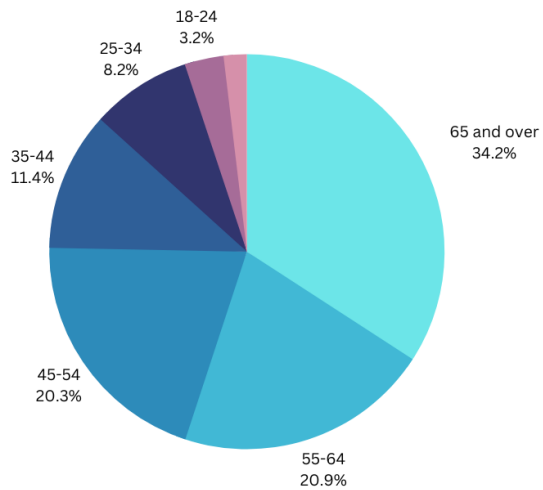
# What does Sunart think?

## Appendix 1- Facts and Figures

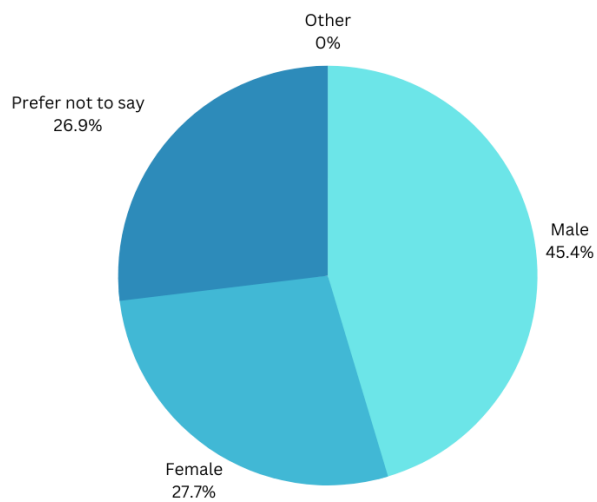
### Stage 1 – Survey

#### Participant Demographics:

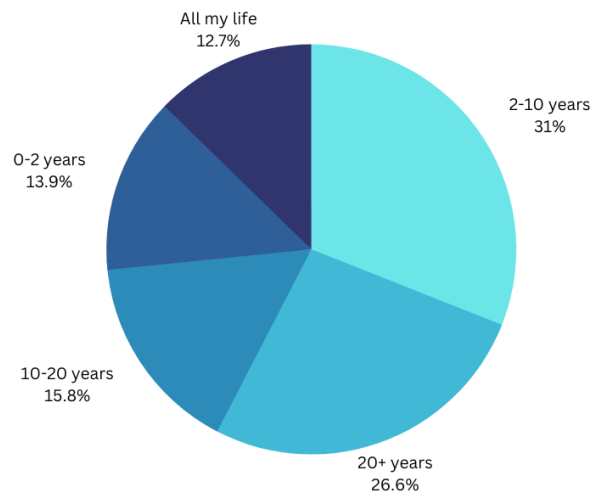
**Age of survey participants**



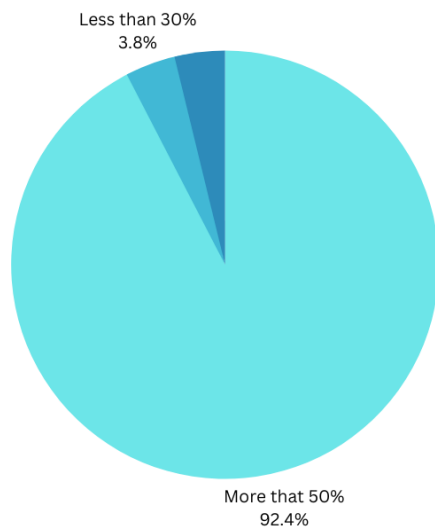
**Survey Participants**



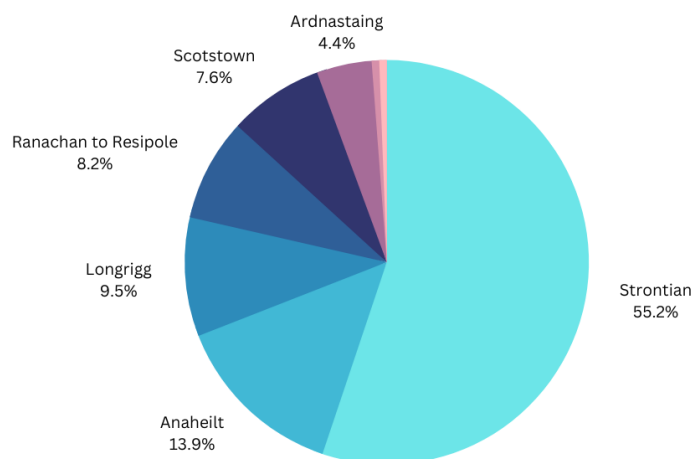
### How long have you lived (or had a property) in Sunart?



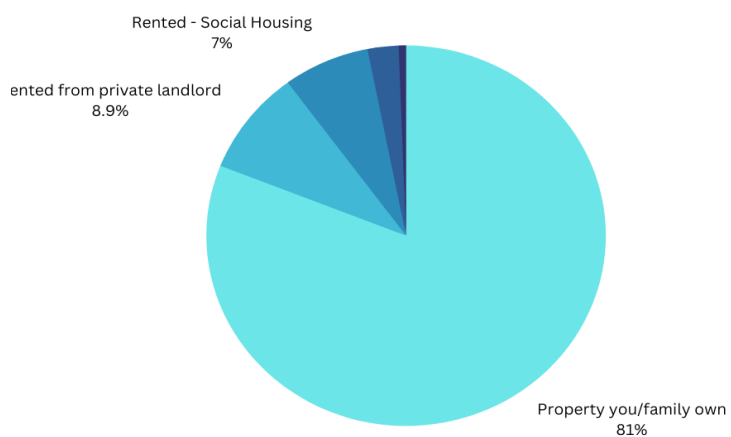
### How much of the year do you live in Sunart?



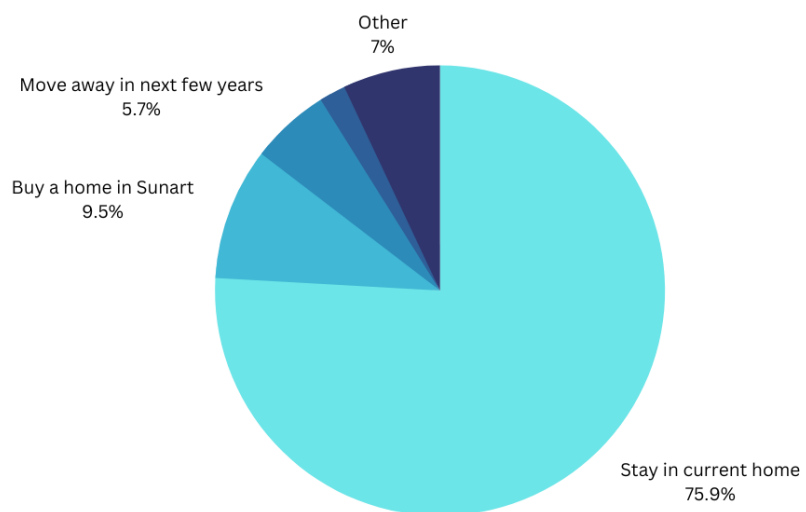
### Your Sunart Residence is in:



### Your main home in Sunart is:

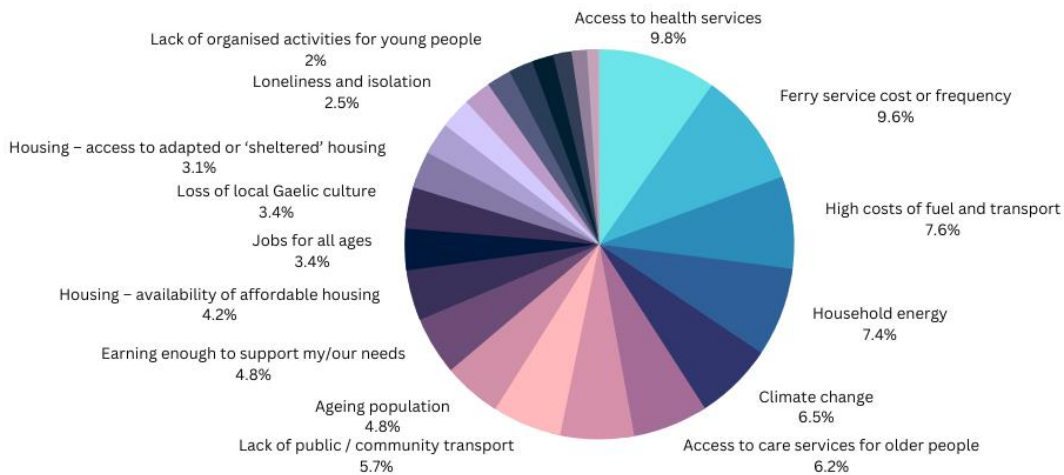


### If you could alter your housing situation would you prefer to:

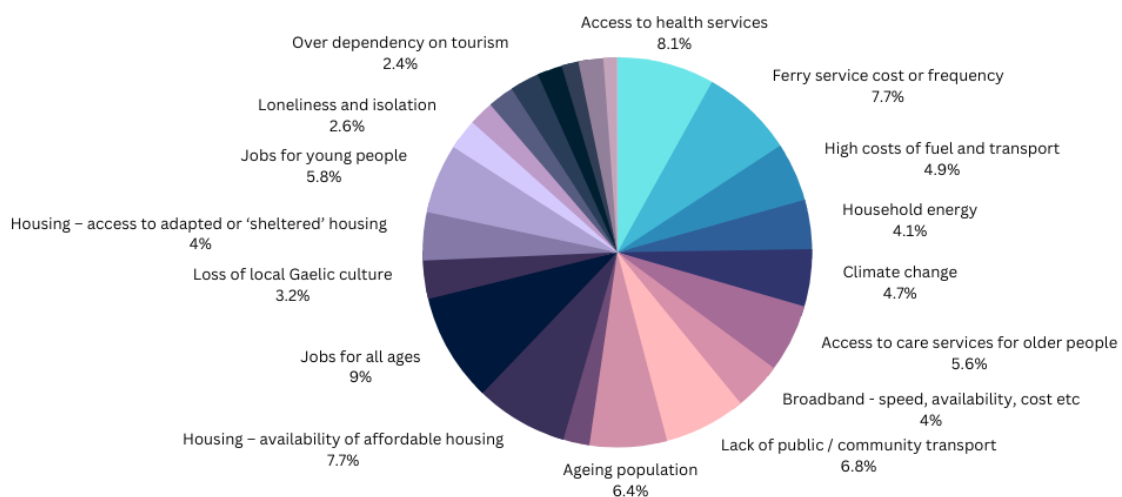


## Survey Responses facts and figures:

### Concerns for your future



### Concerns for the future of the community





**Do you think Strontian needs another large space for functions and community events to replace the village hall?**

158 out of 158 answered

**Yes (86 resp.) - 54.4%**

**Possibly (43 resp.) - 27.2%**

**No (29 resp.) - 18.4%**

**Would you be prepared to join a committee to develop plans and/or fundraise?**

122 out of 158 answered

**Possibly (68 resp.) - 55.7%**

**No (37 resp.) - 30.3%**

**Yes (17 resp.) - 13.9%**

**If we build a new village hall what new facilities or improvements would you make to a function space:**

	<b>Strongly Agree</b>	<b>Agree</b>	<b>Disagree</b>	<b>Strongly Disagree</b>	<b>Not Sure</b>
<b>Retain sports functions e.g. badminton</b>	22.8%	24.7%	29.7%	4.4%	18.4%
<b>Remove the 'sports' function allowing for lower ceilings and better lighting options</b>	8.9%	31.6%	24.1%	10.1%	25.3%
<b>Improved catering facilities?</b>	29.7%	50.6%	2.5%	1.9%	15.2%
<b>Retain a stage/ curtains / lighting for performances</b>	38.6%	37.3%	5.7%	3.2%	15.2%
<b>Have some of the room carpeted and some hard surface</b>	21.5%	39.9%	11.4%	4.4%	22.8%
<b>Better or more storage?</b>	12.7%	46.2%	3.8%	2.5%	34.8%
<b>Energy efficient heating</b>	58.9%	30.4%	1.9%	0.6%	8.2%
<b>Offices or meeting rooms</b>	28.5%	40.5%	11.4%	1.9%	17.7%

for let to raise income					
-------------------------	--	--	--	--	--

**Would you be interested in learning more about the history and heritage of your community?**

158 out of 158 answered

**Yes (108 resp.) - 68.4%**

**Possibly (34 resp.) - 21.5%**

**No (16 resp.) - 10.1%**

**Do you support the community acquisition of the Church Building?**

158 out of 158 answered

**Yes (110 resp.) - 69.6%**

**Not Sure (35 resp.) - 22.2%**

**No (13 resp.) - 8.2%**

**Would you be interested in helping volunteer to maintain the building and grounds or help with exhibitions and archive work?**

145 out of 158 answered

**Maybe (67 resp.) - 46.2%**

**No (42 resp.) - 29%**

**Yes (36 resp.) - 24.8%**

**Do you support the community acquisition and development of Longrigg Woodland?**

158 out of 158 answered

**Yes (101 resp.) - 63.9%**

**Not Sure (41 resp.) - 25.9%**

**No (16 resp.) - 10.1%**

Here are some examples of proposed land uses for Longrigg, for the benefit of our community. Please score proposed uses:

158 out of 158 answered

	Strongly Agree	Agree	Disagree	Strongly Disagree	Not Sure
Community activity (walking, mountain biking etc)	41.8%	40.5%	7%	0.6%	10.1%
Woodland crofts/community wood lots	27.2%	42.4%	10.8%	3.2%	16.5%
Eco-housing project to meet local affordable housing needs	32.9%	36.7%	13.3%	1.9%	15.2%
Community firewood production	35.4%	39.9%	8.2%	1.9%	14.6%
Outdoor learning space for education (both in and out of community)	29.1%	43.7%	9.5%	1.9%	15.8%
Commercial restock/timber growing	13.3%	32.3%	22.2%	5.7%	26.6%
Peatland restoration	25.9%	38%	8.2%	0%	27.8%
Native woodland restoration	44.9%	39.9%	1.9%	1.9%	11.4%
Biodiversity enhancement	40.5%	36.7%	5.7%	1.3%	15.8%

To what extent do you feel that the paths 'infrastructure' in Sunart should be replaced or maintained, rather than being downgraded to informal routes?

158 out of 158 answered

**Strongly Agree (102 resp.) - 64.6%**

**Agree (40 resp.) - 25.3%**

**Not Sure (9 resp.) - 5.7%**

**Disagree (6 resp.) - 3.8%**

**Strongly disagree (1 resp.) - 0.6%**

**Do you support the idea of a permanent shed on the show field?**

158 out of 158 answered

**Yes (121 resp.) - 76.6%**

**Not Sure (32 resp.) - 20.3%**

**No (5 resp.) - 3.2%**

## **Gaelic**

**Do you speak Gaelic?**

158 out of 158 answered

**No (110 resp.) - 69.6%**

**A little (37 resp.) - 23.4%**

**Yes (11 resp.) - 7%**

**Would you be interested in learning more Gaelic?**

158 out of 158 answered

**No (66 resp.) - 41.8%**

**Yes (55 resp.) - 34.8%**

**Maybe (37 resp.) - 23.4%**

**If you have primary or pre-school age children, are you aware of the opportunity and benefits of Gaelic Medium Education?**

62 out of 158 answered

**Yes (29 resp.) - 46.8%**

**No (23 resp.) - 37.1%**

**Not Sure (10 resp.) - 16.1%**

**If you have primary or pre-school age children, are you interested in having your child(ren) educated through the medium of Gaelic?**

54 out of 158 answered

**No (22 resp.) - 40.7%**

**Yes (18 resp.) - 33.3%**

**Not Sure (14 resp.) - 25.9%**

**If you have primary or pre-school age children, would you support a Gaelic Medium Unit in Strontian Primary?**

57 out of 158 answered

**Yes (31 resp.) - 54.4%**

**No (15 resp.) - 26.3%**

**Not Sure (11 resp.) - 19.3%**

## **HEALTH and WELLBEING**

**How would you describe your health in general?**

158 out of 158 answered

**Good (72 resp.) - 45.6%**

**Very Good (49 resp.) - 31%**

**Fair (28 resp.) - 17.7%**

**Poor (9 resp.) - 5.7%**

**If you have a long-term health problem or disability, would you say your day-to-day activities are limited?**

138 out of 158 answered

**Does not apply to me (51 resp.) - 37%**

**Slightly limited (33 resp.) - 23.9%**

**Am not limited (32 resp.) - 23.2%**

**Prefer not to say (12 resp.) - 8.7%**

**Very limited (10 resp.) - 7.2%**

**If you require assistance with day to day living what sort of help do you require?**

34 out of 158 answered

**Prefer not to say (17 resp.) - 50%**

**More social activities to get me out the house (3 resp.) - 8.8%**

**Adaptations to my house to help with mobility issues (2 resp.) - 5.9%**

**Befriending visits or phone call once per week (2 resp.) - 5.9%**

**Other (12 resp.) - 35.3%**

**Have you or any of your close family members struggled with your mental health in the last 12 months?**

158 out of 158 answered

**No (69 resp.) - 43.7%**

**Yes (60 resp.) - 38%**

**Prefer not to say (24 resp.) - 15.2%**

**choice 4 - (5 resp.) - 3.2%**

**What would you say were the main drivers of the mental health challenges you or they have experienced?**

150 out of 158 answered

**Health (36 resp.) - 24%**

**Financial/Cost of living (27 resp.) - 18%**

**Loneliness/Isolation (27 resp.) - 18%**

**Loss/Bereavement (20 resp.) - 13.3%**

**Drugs/Alcohol (12 resp.) - 8%**

**Other (86 resp.) - 57.3%**

**If you tried to, have you or your family member been able to access useful mental health support?**

152 out of 158 answered

**Does not apply (96 resp.) - 63.2%**

**Yes (35 resp.) - 23%**

**No (21 resp.) - 13.8%**

## **COST OF LIVING**

**What is your employment status? Please tick all that apply.**

158 out of 158 answered

**I am retired (65 resp.) - 41.1%**

**I am employed (49 resp.) - 31%**

**I am self-employed (38 resp.) - 24.1%**

**I am part-time employed (12 resp.) - 7.6%**

**I am studying (4 resp.) - 2.5%**

**I am unemployed (3 resp.) - 1.9%**

**Which of these phrases best describes how you and your household are managing financially at the moment?**



158 out of 158 answered

**Get by alright / just OK (75 resp.) - 47.5%**

**Manage very or quite well (56 resp.) - 35.4%**

**Prefer not to say – (17 resp.) - 10.8%**

**Currently struggling or have financial difficulties (10 resp.) - 6.3%**

**With the cost of food, electricity and heating rising this winter – which of these phrases best describes how you and your household will be by the Spring 2023?**

158 out of 158 answered

**Should get through it with some change of spending (114 resp.) - 72.2%**

**Should manage to get through the crisis comfortably (38 resp.) - 24.1%**

**Will be unlikely to pay all my bills and may be in financial difficulty (6 resp.) - 3.8%**

**Which of these activities do you think would be helpful to you and/or the community?**

158 out of 158 answered

	<b>Strongly Agree</b>	<b>Agree</b>	<b>Disagree</b>	<b>Strongly Disagree</b>	<b>Not Sure</b>
<b>A 'community fridge' or similar project</b>	21.5%	44.3%	5.7%	0%	28.5%
<b>A community pantry</b>	22.8%	41.1%	5.1%	0.6%	30.4%
<b>Car club/car share scheme</b>	24.7%	44.9%	5.7%	1.3%	23.4%
<b>Community firewood scheme</b>	32.3%	49.4%	5.1%	0%	13.3%
<b>Hardship grant/payment</b>	25.9%	43.7%	2.5%	0%	27.8%

**Would you be interested in a benefit check with the Citizens Advice Bureau or Highland Council to check if you are entitled to any further assistance?**

158 out of 158 answered

**No (130 resp.) - 82.3%**

**Yes (28 resp.) - 17.7%**

**CAR CLUBS/CAR SHARING SCHEMES:**

**If such a scheme were available would you use it?**

158 out of 158 answered

**Possibly (70 resp.) - 44.3%**

**No (45 resp.) - 28.5%**

**Yes (43 resp.) - 27.2%**

**Would you be interested in becoming a volunteer driver?**

158 out of 158 answered

**Not in a position to volunteer (72 resp.) - 45.6%**

**No (40 resp.) - 25.3%**

**Possibly (34 resp.) - 21.5%**

**Yes (12 resp.) - 7.6%**

**If you answered 'YES' do you have a preference for which routes you might help with?**

33 out of 158 answered

**Any (20 resp.) - 60.6%**

**Journeys to Fort William (12 resp.) - 36.4%**

**Journeys to Raigmore (1 resp.) - 3%**

**FOOD SHARING INITIATIVES**

**If you have a garden or land with space for growing fruit or veg would you be willing to allow someone else to use it to grow produce?**

158 out of 158 answered

**No space available (64 resp.) - 40.5%**

**Possibly - need more detail (51 resp.) - 32.3%**

**No (31 resp.) - 19.6%**

**Yes (12 resp.) - 7.6%**

**If you don't have access to a vegetable plot but would like to grow more fruit and veg would you be interested in a community allotment, orchard or (as above) using someone else's garden plot?**

158 out of 158 answered

**Not interested (87 resp.) - 55.1%**

**Possibly (41 resp.) - 25.9%**

**Yes – Allotment (27 resp.) - 17.1%**

**Yes – Orchard (17 resp.) - 10.8%**

**Shared Garden Plot (8 resp.) - 5.1%**

**Would you be interested in donating food you can't use to the fridge:**

158 out of 158 answered

**Yes (95 resp.)** - 60.1%

**Possibly (55 resp.)** - 34.8%

**No (8 resp.)** - 5.1%

**Would you be interested in using produce from the 'Community Fridge'?**

158 out of 158 answered

**Possibly (68 resp.)** - 43%

**No (55 resp.)** - 34.8%

**Yes (35 resp.)** - 22.2%

**Would you be interested in helping to be on an organising group to set it up and monitor the 'Fridge'?**

158 out of 158 answered

**No (74 resp.)** - 46.8%

**Possibly (71 resp.)** - 44.9%

**Yes (13 resp.)** - 8.2%

## **ENTERTAINMENT**

**Would you like to see more community run social events (e.g. Christmas breakfasts, quiz nights, Burns' Suppers, music nights, ceilidhs, stars in their eyes)?**

158 out of 158 answered

**Yes (114 resp.)** - 72.2%

**Possibly (38 resp.)** - 24.1%

**No (6 resp.)** - 3.8%

**Would you be interested in volunteering to help organise community social events ?**

158 out of 158 answered

**Possibly (75 resp.)** - 47.5%

**No (58 resp.)** - 36.7%

**Yes (25 resp.)** - 15.8%

## **GENERAL COMMUNITY QUESTIONS**

**To what extent would you agree or disagree that people in sunart pull together to improve the community?**

158 out of 158 answered

**Agree (87 resp.) - 55.1%**

**Not Sure (33 resp.) - 20.9%**

**Strongly Agree (27 resp.) - 17.1%**

**Disagree (11 resp.) - 7%**

**Strongly Disagree (0 resp.) - 0%**

**Community councils are voluntary bodies run by local residents elected every 4 years, to act on behalf of its area. Community councillors play an important role in local democracy, bridging the gap between local authorities and communities.**

**To what extent do you feel that the Sunart Community Council is accessible, listens to suggestions, and works to support local residents?**

158 out of 158 answered

**Agree (73 resp.) - 46.2%**

**Not Sure (49 resp.) - 31%**

**Disagree (17 resp.) - 10.8%**

**Strongly Agree (14 resp.) - 8.9%**

**Strongly Disagree (5 resp.) - 3.2%**

**The Community Company is a charity established in 2005 to take forward local projects, own property and equipment on behalf of the community, and to raise funds to make improvements to the area to benefit visitors and residents. The volunteer board of directors is elected by its Members, at AGM's. Membership is free to all residents of Sunart.**

**To what extent do you feel that the Sunart Community Company is accessible, listens to suggestions, and works to support local residents?**

*158 out of 158 answered*

**Agree (80 resp.) - 50.6%**

**Not Sure (50 resp.) - 31.6%**

**Strongly Agree(19 resp.) - 12%**

**Disagree (6 resp.) - 3.8%**

**Strongly disagree (3 resp.) - 1.9%**

**Overall, how satisfied or dissatisfied are you with Sunart as a place to live?**

158 out of 158 answered

**Satisfied (86 resp.) - 54.4%**

**Very Satisfied (69 resp.) - 43.7%**

**Dissatisfied (3 resp.) - 1.9%**

**Very Dissatisfied (0 resp.) - 0%**

## Stage 2- Survey for young people

### Sunart residents:

2/18 participants live in Ranachan to Resipole area

11/18 participants live in Strontian

1/18 live in Longrigg

3/18 live in Anaheilt

1/18 live in Carnoch to Laudale area

**40 participants based outwith Sunart area**

**Note answers in GREEN are Sunart residents**

### What do you like about (living in) Strontian

I love how most of my friends are here

The people

Views

Friendly people, small community

The views, my family and friends

The outdoor spaces, walks in nature, there has been a lot of children coming to the area which keeps it alive to a certain extent

There are activities and I'm close to my friends

I like the walks and the scenery

It's quiet most of the time

Lovely location, quiet, good community

Quiet, views

It's quiet

Quiet area, nice people

The peacefulness, views

There is an element named after it

Going out with my friends

It's very beautiful, there are quite a few amenities, not too many people

It has a nice green space and everyone is near each other

Quiet, friendly people

The people are friendly

The view, the environment

The peacefulness of the area

The peacefulness of it and the café

The rural environment

The remoteness

The hills and the small community

The access to school and library, youth club

There are activities throughout the week

The people, the scenery

The high school

Everything is close together, nice forests

The shop

The scenery, the wildlife, the shop, the highschool

Scenery, birds

The scenery

The shop and the café

My friends

The scenery is lovely, there isn't much litter

Hanging out with everyone

The scenery is really lovely, and the environment is clean

The people are friendly

Views

A lot of my friends live here

Shop, people

The community and the outdoor area	It's nice weather sometimes	Not too busy, not too many people
The walks and pitch	It looks nice	It is a very polite community
The view and people, shop	There's always something to do	The shinty
The people are nice	Friendly community	I don't live in Strontian but I like its wildlife
It's compact and close together	It has got nice people	

#### What do you dislike about (living in) Strontian?

Nothing	Far away from everything e.g. shops	Nothing really
Not a lot of opportunities	Far away from places	Not a lot going on, barely any transport
Lack of services	The environment being destroyed	Lack of services/places to socialise with people
Not much public transport, drug dealers/crime	No fast food like McDonalds'	It's a remote place
It's isolated and there is not much to do	How far away it is from everywhere	Sometimes in the summer it can get too busy with tourists, buildings are boring
Change houses to Tobermory vibe, roads are awful, not enough community occasions	The potholes and corners	It's a bit small but nothing else
Not enough school trips	The rain and wind	It can be a bit grey, bad roads
The dog poo on the walks!	The weather	I don't live here
Only 2 shops	Having to travel to get to activities	No shinty club house
Not many opportunities for work etc	No swimming pool	It's too far away
Bad buses.	Almost everything far away and the roads are bad	Having to travel
It's too isolated	It's far away from things like swimming pool, cinema	Having to travel long distances
Not many shops or things to do, far away from lots of things	The weather	The shops too far away
Not much to do	The horses, the facilities	Middle of nowhere
No McDonald's	Not many facilities, no swimming pool	The one road from Acharacle to Strontian
The weather	There are only 2 shops not a lot	Nothing
Very busy in summer, roads are awful, buildings are drab	Only 2 shops	Nothing
There is not much to do in the village and it is hard to get into town	The forest path is rubbish	Park not the best, lack of senior youth activities
Remote, difficult to get to other places independently	Not much to do especially in bad weather and too much forestry (plantation)	Lack of transport to surrounding areas e.g. fort William
		Nothing



## When you think about your future in Strontian what are you excited about?

School	Being near family and interacting with the community	I hope for a place that is environmentally friendly and clean
More buses to travel from strontian to other places	Being near family	More shops, like clothes
Holidays here during uni	Leaving high school successful	I hope for a place that is environmentally clean and safe
Making it more environmentally friendly	Shinty	Being near family
Leaving, but I am excited as well that it is a nice rural area and for other people who like that sort of thing	Shinty	Holidays here during uni
The peacefulness and being back in nature, if I move back from cities	It's important it stays small but shouldn't be lonely or inconvenient place to live	Hopefully getting a swimming pool
School, seeing friends, gatherings	Sports	Leaving school
I'm excited about having new bridges	How the community and people aspect will change and how the environment will change	Finishing school
Not sure	The opportunities for work and more inclusion as I grow older	Better pavements
Community buying Longrigg Woodland	Nothing	New places
New things	Nothing	The possibility of new shops, the weather
Living in a quiet area	The development about the village	Better for each generation
Don't know	Finishing school	Leaving
The new dail mhor area (amphitheatre?)	Future shops	Buying a house
Cool people	Future possible clubs	Don't know
Going swimming in the summer	It growing and being more supportive with everyone	That I will be able to make the villages better
Environmentally clean, happy to come back	Joining possible clubs	Leaving
Developing the old school and village hall	Joining clubs	When I live on my own
	My friends	Getting a job and start life
		Big, smarter
		No more potholes

## When you think about your future in Strontian what are you worried about?

Climate change	Buying land to build house = expensive, price of housing, community falling apart, like it kind of has after covid	The narrow roads
Not a lot of jobs for young people		Not really worried about anything
The population decreasing		Lack of services, no housing (too expensive)
Too many people moving here	School exams	
Climate changing	That it gets taken over by tourists	

Having to drive too far to get to the shops and other things like that

Nothing

More people, it's nice and quiet don't ruin it

Nothing

Littering

No housing due to holiday houses owned by both locals and folks from elsewhere, people selling houses for high prices, village/community may fall apart

The hosts will be destroyed

Housing, jobs, lack of young people

Jobs, housing

Leaving school unsuccessful

The distance from the shops and people moving away

It being far from Lochaline

The aging population and lack of facilities

The population

The plastic and environment

People

Electric cars and no farming

People being mean

Not enough jobs

It's getting overpopulated

Da bad peeps

Not much

Sea level rise

More tourists, less locals, and more caravans

The hills may be gone to make houses

Not enough opportunities

All the local houses will be bought for holiday homes with nowhere for local people

Exams

The population decreasing and less people wanting to live in this area

Population decreasing and just being old people

Jobs

Nothing really

Housing crisis, it might not be as community orientated

The village being full of holiday houses and no homes for new families

Nothing because I have my friends

Increasing amount of litter

The environment

Sticking to it's close-mindedness

The environment, prejudice

Litter

I'm worried about new houses becoming holiday homes. We have enough.

The forest being destroyed

Exams

Nothing

Amount of buses available and deforestation

Deforestation and how the environment will change

Nothing

### What this village needs is

My friend!

More opportunities for young people and more buses than once a day

Fun things

Replanting forestry plantations, and replanting the hills in the glen

Another café and shops

Community events – bring ceilidhs back, new modern café

More activities

More community gatherings

No potholes

More things to do, mountain biking trails

More shops

A bigger shop, and a barbers

More access to shops/deliveries from shops

A new park for older kids

To stay the same! 😊

More shops

New café, re use of the village hall, something done with old primary school

A better play park

Better roads

More transport to other areas e.g. fort William

A swimming pool

Repainted houses	More community areas like a new café/community hub like Lochaline has, something done with old primary school	A park with a water fountain
A swimming pool and better park, and skate or bike park		Swimming pool
Swimming pool	More shops	More shops
More community get-togethers		?
More opportunities like charity shops	Swimming pool and more houses, place for teenagers to hang out	Swimming pool
Medical centre		More parks
More opportunities	Fun things	
A charity shop	A swimming pool and new village hall	More affordable housing, places for young people, have fun outwith the school
People who are about making a change	pool	Affordable housing, places for young people to chill
More opportunities to support high schoolers	Shops, swimming pool	A hospital, for emergency situations
New café, more community events	Better infrastructure, more social areas	More places to hang out, park
More shops	More shops	McDonalds
More housing, places to hangout	More diversity maybe	To be jazzed up
	More friendly people! 😊	
	A swimming pool	

## Stage 3 – Events

### *Sunart Paths: Attendee Responses:*

#### **The footpath issues that I think should be addressed this year are:**

Bridge on Fairy path above drimnatorran, boardwalks in phemies, signposts from village centre to paths/sign at the bottom of community woodland walk.

Repairing the boardwalks at phemies and the various bridges along both sides of the Strontian river.

There are a lot of young brambles along the backroad, would be good to have a go at them soon.

Complete clearing back path and fill in holes (An Rathad Cuil).

Having the bridge on Faeries Road reinstated, top dressing river/back path

Maintaining existing paths, signage replacing, putting in benches

Back path needs maintenance, bracken can be a problem, need to do bracken bashing

Footpath between church and Ariundle turning

Ardnastang grazings are overgrown and need cut more a couple of times a year

Maintenance and clear up of path down to beach at Ardnastang – falling trees, overhanging trees, Terram fitted, ditching not clear

Faeries Road maintenance – and drainage, ditching, picnic bench

Placing a bench at the top of the steep ascent from meadows by river – 2 prime spots

#### **Thinking longer term:**

#### **If funds for improvements were to become available in the future, the access routes/amenities that I would like to see improved in the area are:**

Footpath beside strontian river on roadside (pool way)

Maintain walkways on phemies path and path to ardnastang beach.

Beach path at ardnastang, boardwalk in Phemies, bridge on faerie walk/pot holes at Ariundle woodland car park

A footpath along between post office and jetty to begin with

Ardnastang beach to Kilcamb Hotel, boardwalks in phemies, name trees in woods

Woodwork needing replaced on paths parallel to river at longrigg

Benches on faeries road, at top of field of hope replace picnic bench

Bench placed in naturescot woods path in ariundle up to cottage

High Road – fence other side of path to walk safely and avoid cow incidents

#### **If funds for new access routes were to become available in the future, the new routes I would like to see developed would be:**

Water's edge path between Strontian Centre and Ardnastang beach, a path beyond Tom an Sithein, and the forestry track up from Carnoch, to make a loop.

A path from Strontian to Ardnastang beach along the shoreline

Footpath from pier into village

Not sure new routes are necessary as too much to maintain as it is

Existing routes a priority

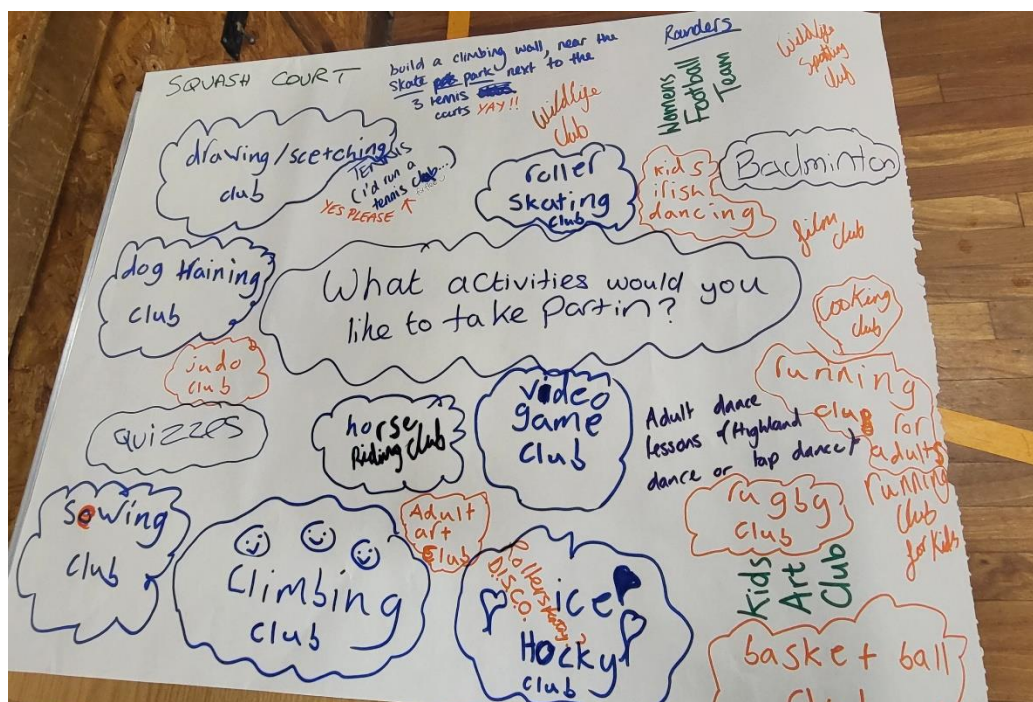
Not sure

Path to the ferry (made from old road), can be made into bike/walk path.

Footpath Strontian to Ardnastang? Link Faeries Road to river path via burial ground?

Roadside from ardnastang along phemies to the village – path or cycle bypass/lane, or larger passing places to make it safer for pedestrians and cyclists

*Social events: Attendee Responses:*



What activities would you like to take part in?

Craft:

local produce/  
"farmers markets"  
with CAP AND Food



AGES

Walking/Hiking club  
do "viking club"?

Street parties  
(not for a coronation!)  
Cinema

Redecorate  
the  
Village Hall

Big "village days out"  
to events e.g. Highland  
Games/park with ~~food~~  
Shed buses providing  
coaches!

They used to be  
great fun.

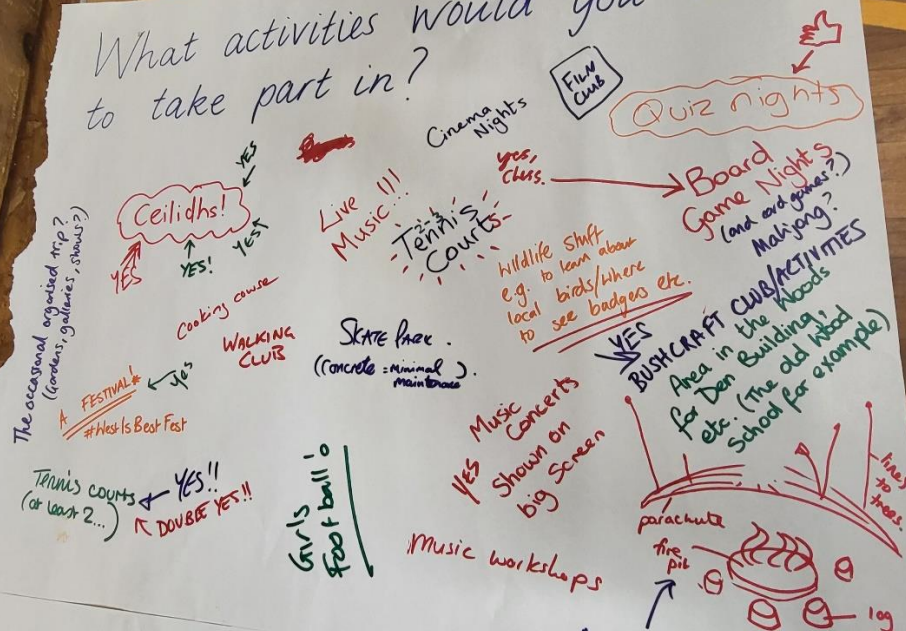
re-start the  
community ~~orchard~~ YES!  
orchard (its behind our  
house!)

Street parties to meet  
the neighbours.

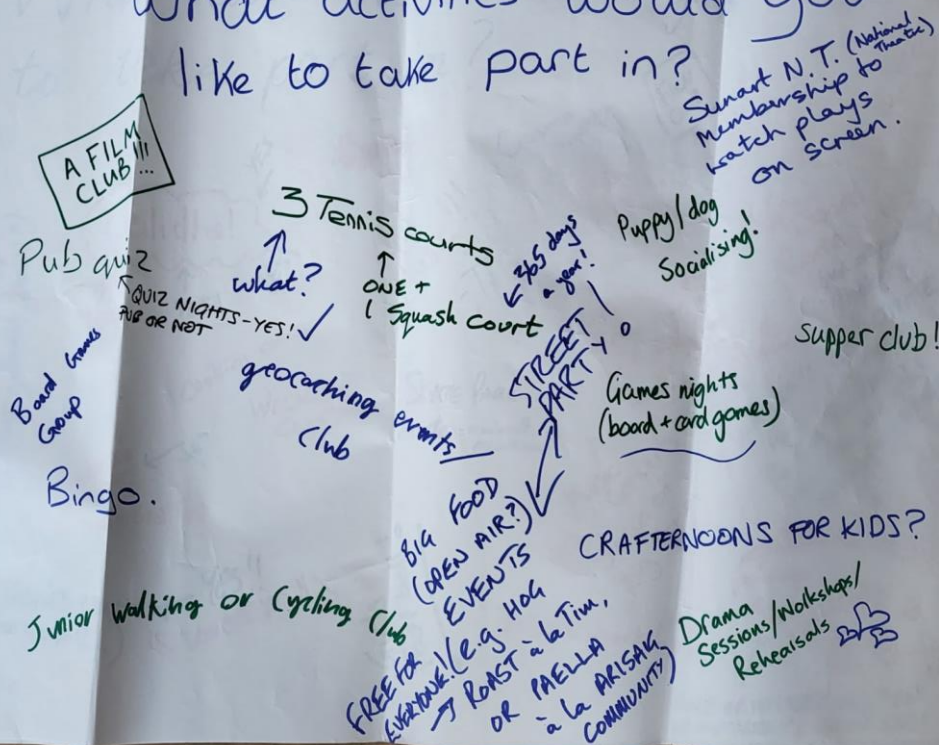
Re-vamp of village  
hall club?



What activities would you like to take part in?



What activities would you like to take part in?



WHAT FOOD-SHARING  
SYSTEM DO YOU  
WANT TO SEE?

• RE-START GREENHOUSE  
+ COMPOSTING FACILITY  
in

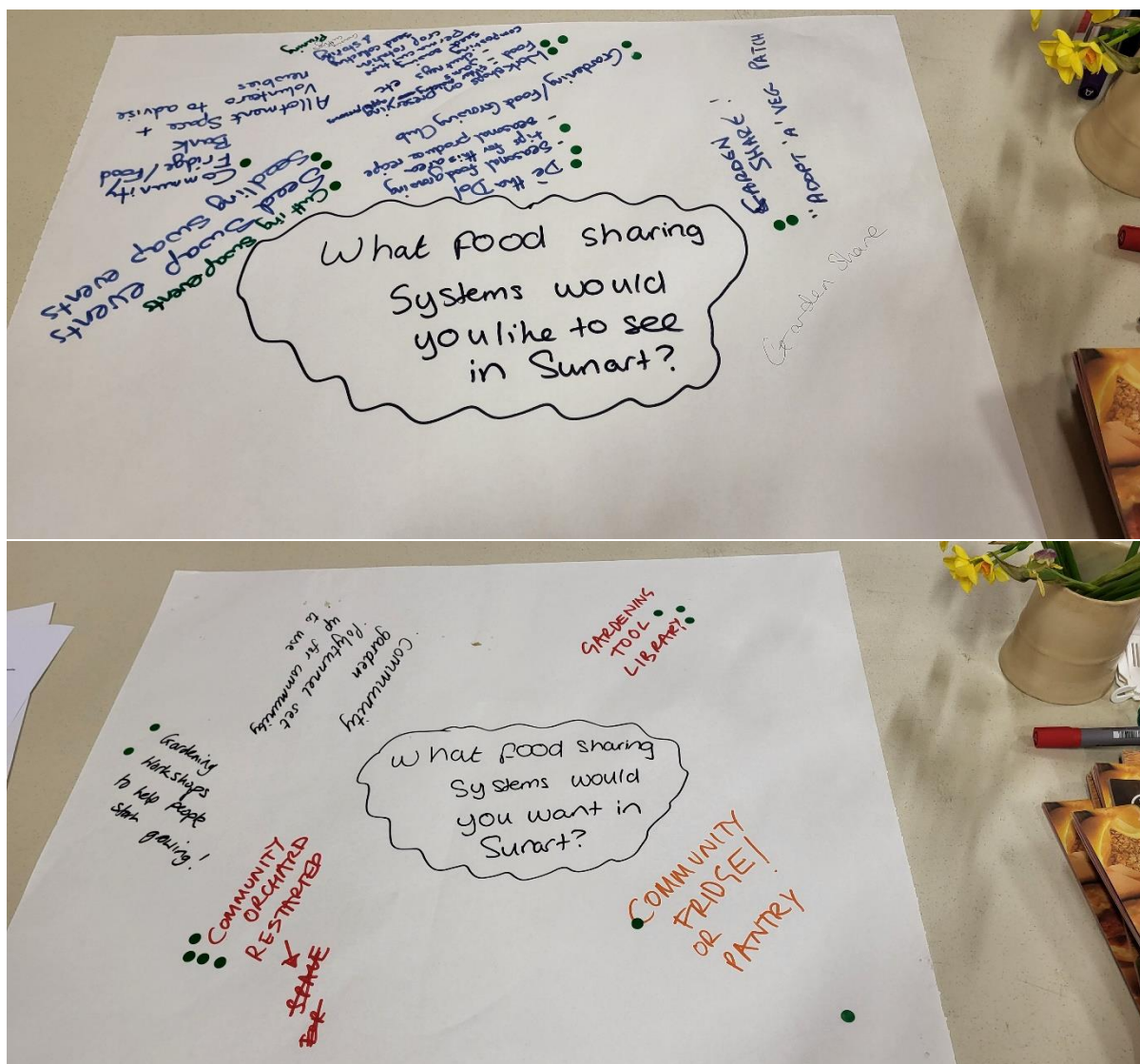
consider  
• grow + sell  
• harvest  
• plant  
• seed - seedling  
• pot - scraps

• deliver  
• harvest  
• grow + sell  
• harvest  
• plant - seedling  
• pot - scraps

• people who grow  
produce selling it locally  
↳ maybe a chance  
of growers??

WHAT FOOD SHARING  
SYSTEMS  
DO YOU WANT TO  
SEE?

- community fridge
- swap, share extra veg and fruit grown in gardens/polytunnels



Written Responses included:

Do you think Strontian could benefit from a food sharing initiative, such as a community fridge or pantry?

Yes (2 Responses) – 100%

Please expand on your answer, and share your thoughts:

I would love to compost other's grass clippings, maybe others would too

There's always a risk of food waste – unexpected absence, home produce glut etc, and always people in need. Also loads of folk travel to Ft William for food – community research would be a way of solving all 3.

What potential challenges can you see a scheme like this facing?

Needs to be monitored and cleaned – need reliable volunteers or a paid coordinator.

What are the potential benefits, in your opinion?

Better land use and lower environmental impact. Reduced food miles. Reduced poverty. Greater social cohesion, upskilled community. More resilient/future proofed community, esp. younger generations.

Car Share Scheme

6 people attended this meeting and the zoom meeting. Overall, attendees were highly interested in such a scheme, and had suggestions about being able to use the car share scheme for longer term use (such as a trip away for the week or weekend), in addition to daily use for shopping trips, work commutes, etc.



## Appendix 2: Comments from initial survey

### If you could alter your housing situation what would you do: – comments for 'other' option:

*spend more time in sunart*

*Live away for university*

*More affordable homes to buy*

*Move to Sunart permanently in 2 years*

*Move elsewhere in sunart*

*Self-build*

### If you have any other concerns or issues that are not covered by either personal concerns or for the community more widely given above, please add them here:

*lack of skilled tradespeople in local area*

*No*

*current balance of 2nd homes/holiday lets vs private rental/home ownership for permanent residents is not healthy for sustainability of community*

*Improved gym facilities*

*we need village hall, an independent space to the high school*

*The public toilets at the shop as well as other parts of the shopping centre need to be upgraded. The picnic benches, signage and bridges around the local walks need to be repaired so that people, whether locals or visitors can enjoy the routes. The community hall should be opened and should be accessible to everyone.*

*cubs and beavers have stopped - lack of hall?*

*easy access to fruit and veg, locally sourced and zero-waste food. A decent pub/focus for socialising that isnt gaelic, scottish dancing, bagpipes, or exclusively "scots!"*

*Neglect and misuse of crofts, and absenteeism, meaning those who want crofts cannot get them whilst those who have them are in breach of their responsibilities.*

*lack of village hall means many activities have never restarted after lockdown*

*More social activities*

*Availability of affordable housing*

*paying high costs for deliveries*

*The resilience of our infrastructure to cope with increased traffic from tourism and the damage from climate change*

*concerned about the environmental impact of salmon and mussel farming on health of local waters and wildlife - also from an animal welfare p.o.v. with respect to salmon farms, very contentious though as they are big employers obviously...*

*Infrastructure ie road and access to main services. These are the issues that stop me moving permanently to the area. A fixed link bridge is required for corran narrows.*

*Dogs aren't allowed on buses. Only rich people can have a pet and travel?*

*Lynne Marshall*

*The lack of facility to conduct funeral services with a gathering place afterwards. E.g. the railway club type of place. The other venues are not suitable*

*No village hall. Greatly needed*

*Young people, i.e. school leavers, not being able to access work opportunities in say fort william, due to not being able to travel there without own transport*

*Fire brigade service*

*Peoples reluctance to change in an ever changing environment*

*Ratio of holiday lets to residential homes*

*Community sustainability - community provision of local energy, food and healthcare*

*no*

*"Jobs for all ages" would also require "availability of affordable housing".*

*None*

*Littering - which is just as bad outside of tourist season suggesting locals are responsible*

*It's a shame the pub only seems to be open at night time even at the weekends, the front of the local shop is in real need of a revamp, are they ever going to finish the disabled access, also no disabled access in shop car park, also the choice of food produce etc at the Strontian stores is terrible I hate having to go into fort William for a food shop*

*The life here is great but jobs are away for most part, and it costs a fortune to simply go to work and pay for*

**Do you have any other concerns or issues about housing or business development that are not covered above?**

*Too many second homes and holiday homes to build the community around. lack of access to housing stopping younger people/families moving here*

*Yes there needs to be affordable housing to keep the community alive, but sensitively done. it is vital NOT to build a road bridge*

*lack of workshops for businesses/individuals*

*housing should be for LOCAL PEOPLE, not people from elsewhere*

*too many big, expensive second homes. What business development??*

*workshops not available*

*Too many holiday homes pricing out our own young people who want to live here (not affordable housing because that is usually rented)*

*Young ones should be encouraged with entrepreneur ideas and schemes. A possible school award to reward talented young ones*

*Existing local businesses need all the support they can get, so community enterprises should not operate in competition with private businesses*

*Local business need to be supported so community enterprises should not be offered in competition with them*

*Ratio of non resident property owners to resident owners. Access to vehicle repairs - either another commercial garage or a rentable space and equipment to do own repairs. Trouble getting (i.e collecting)*

*the ferry. We depend on those expenses to get food too, as we cannot rely on Keystore stores to provide quality/affordable/fresh food. Another cost for residents : deliveries, ferries (5 pounds worth tickets ) each time. Buses are non existent and not adapted to younger working people commuting and having to commute to Fort William and other parts. For elderly residents, not many buses as well and apart from volunteers, they are not helped for appointments in hospital etc. Everything is harder for all the residents not living on tourism.*

*Policing resources being drafted into Fort William more frequently and not policing the remote communities*

*prescriptions and getting decent amounts, need better dispensary/proper chemist. Roads in poor condition e.g. longrigg and anaheilt*

*Electric charging point*

*I won't be able to stay in Sunart unless I can buy a home or at least rent an affordable, well maintained one*

*Key workers struggle to rent, let alone buy a house around here.*

*Too many holiday homes, when young people are leaving the area as they cannot get affordable housing, second homes are an indulgence this community cannot afford.*

*Economic units would be useful*

*My concern with housing is the huge increase in second homes that are unoccupied much of the year and the over inflated prices this has brought the local housing market. Our key worker cannot afford to live and work here, which is not sustainable for a community. Business development away from tourism is needed to create a greater diversity of employment opportunities.*

*Probably but can't think of any at present*

*Not enough affordable rented housing which affects ability of working population to live here*

*The lack of affordable housing is a major issue. Currently 3 high school teachers can't find permanent housing.*

*Need more housing that is just for residents and cannot be sold as holiday housing.*

*New business opportunities would be very welcome as the population increases there will be a shortage of local jobs available*

*Affordability/Availability of housing for locals*

*business units for start ups*

*Local small business units*

*Over-reliance on tourism is a double-edged sword. It brings money into the local community along with some employment, but also prevents housing from being available for long-term living and limits the development of other businesses. Its seasonality also*

*contributes to a dramatic change in the community over winter (or over summer, depending on how you look at it).*

*There is a disproportionately low number of permanent residents to properties in the area.*

*Too many second homes / holiday homes*

*There should be at least a couple of houses designated for school teachers, is there any business development in Strontian?*

*Lack of opportunities to buy land to be able to build a house*

*Lack of affordable housing, FTB houses and private rent due to tourism/Airbnb/second homes*

**Please indicate below your reservations or alternative suggestions to having a large space for events that replaces the village hall:**

25 out of 158 answered

*The school is utilised well and church hall useful too*

*The church is coming up for sale. a village hall ready made without the religion! Perfect. I could not support any community project that includes a place for worship. There's no such thing as god. it's about time humanity left that madness in the past*

*more use should be made of sunart centre*

*refurb existing and convert old primary to housing/office space*

*nothing wrong with the existing hall*

*Dail mhor house and associated buildings should be renovated!!*

*nothing wrong with the building as it is*

*Why an indoor one other than weather reasons? A large canopy area would be interesting, something like a larger version of ardgour pizza's canopy area*

*we like the hall as it is*

*Use money to renovate existing hall and school*

*Affordable housing/ flats*

*I think there's plenty room @ the high school*

*Already have the Sunart centre*

*Full use should be made of the Sunart Centre*

*The Sunart Centre has excellent facilities. Better to have one facility that thrives than 2 that don't.*

*Sunart centre is a large venue*

*We have the sunart centre that works well*

*Sunart Centre is a great space for such events*

*Sunart centre is fit for purpose for this*

*Have the Sunart Centre*

*There are suitable facilities at the high school and these should be made more readily available to the community for functions, meetings and events.*

*Sunart centre has facilities for functions*

*The Sunart Centre is possibly enough to meet the needs. It seems quite expensive to hire so maybe some way of reducing the cost for local groups could be found.*

*Without primary school use the hall would be a very costly project for possibly only a few community gatherings. Most events could be accommodated in the Sunart Centre.*

*We have the Sunart centre which i personally think is a hugely underutilised resource*

**Do you feel that there are other facilities that it would be good to incorporate into a new community building if funds can be found?**

79 out of 158 answered

*Make sure no existing facilities are duplicated, work with existing organisers and community providers to ensure what is created/developed first isn't wasted*

*fitness equipment already at sunart centre. share offices a great idea/ VAL lochaber model?*

*depends how different rooms placed, some activities might be too noisy for someone wanting quiet office space*

*Regular local produce shopping/market, plastic free shopping, no need for supermarket shop then. a pool would be great! A workshop space to up cycle on this side of Loch Linnhe!*

*exercise pool - excellent for teaching primary age children to swim and for the health of the elderly, plus possible tourist attraction*

*shared workspaces*

*Surely sunart centre fulfils this brief? also shared workspaces could be in old school*

*exercise pool, swimming lessons for children*

*display of local artifacts*

*Plans for pool to go into new high school were drawn up. use existing gym in high school*

*a hall that offers warmth and a cosy welcoming space. Something that facilitates community gathering and family celebrations. sustainable both economically and environmentally. A shared village space for sharing and welcoming others - something aesthetically pleasing*

*hydrotherapy or exercise pool*

*can't see justification in the above examples given*

*pool and gym, but would need to explore if there would be enough interest from the peninsula to make it commercially viable*

*exercise pool would be good for local fitness and schools*

*swimming pool*

*shared offices/workspaces*

*Affordable studio/workshop spaces for local crafts people to rent?*

*Affordable start up workshops spaces to encourage small businesses to actually create work, not more offices*

*Hydrotherapy/exercise pool*

*exercise pool would be good. small meeting rooms would be handy*

*gym*

*Small business spaces for more job opportunities*

*Good acoustics so it can be like glenuig hall, also gaelic culture and yoga/pilates room. Warm room as I don't think energy crisis will go away. Pool table*

*We have the sunart centre fitness and sport. Offices or workspace would be good*

*Expense is a huge barrier, although hydrotherapy or exercise pool would be desirable for those not able to travel to the fort*

*Swimming pool may serve the wider community without having to travel to Strontian*

*Fitness equipment provision already exists. Hydrotherapy pool would be ridiculously expensive to build and operate, and there is an existing facility in fort william*

*Hydro pool - too expensive. Fitness equipment already in high school*

*fitness equipment*

*1. fitness, 2. businesses*

*Better gym than that of school for sure and with better opening hours*

*Thought school has access to a gym? If not then yes. Exercise pool/swimming pool - yes. All ages all abilities, community meeting point, clubs, water safety. On travels in canada and remote places there, we were struck by the use of community pools by seniors exercise classes, free swims which were*

*actually social! Young people, toddlers, kayak clubs, water polo, swimming lessons, water safety, school use. Tourist use on wet dates. Community pools were used by all ages, all abilities, all year*

*Sporting facilities, especially fitness, and cinema/film facilities*

*Fitness equipment is already at the high school so not needed. Much of the above is present at the Sunart Centre so why duplicate at a high cost? Better access to school/centre facilities needed instead.*

*Past experience has shown that fitness equipment would initially be utilised but soon be rarely used. Cost of hydrotherapy pool would be difficult to justify with small population and demographics of current population*

*For the examples given above, there are or should be other facilities provided. Avoid a one size fits all, or trying to squeeze too much in to the one building. Also, some use options might not sit well together.*

*Sauna/ well equipped gym*

*Offices or shared workspace would be good.*

*Exercise pool for sure, somewhere to have local heritage materials.*

*Sunart Centre should be utilized for its sport setups, its gym equipment and its concert hall venue. Village hall should be utilized for clubs, small classes, intimate performances, and parties.*

*Swimming pool (doesn't need to be big, similar to that in the Isle of Glencoe Hotel). Full sized tennis courts - indoor /outdoor - a whole peninsula without tennis is unbelievably sad.*

*A least two separate functions rooms with good sound proofing so that more than one community group can use it at a time.*

*Gym and or shared workspace*

*Hydrotherapy*

*Shared work spaces for small businesses*

*Treatment room for hire might be useful eg massage/physio. Design the building so it can have multiple uses. Good space for a ceilidh essential and nice appearance so it could be hired out for events.*

*Fitness equipment, pool*

*Exercise pool*

*Love the idea of a hydrotherapy pool*

*I have answers strongly agree/disagree when I think that the high school could already be used for these reasons (sports, performances etc).*

*Workspace for small businesses/rented area which home workers could hire on ad hoc basis with good wifi*

*all of the above*

*Shared workspace or 'studio' type spaces for makers and creatives*

*Shared workspace for home workers/small businesses. cinema screen*

*Fitness equipment that is paid for with use*

*Small business hot desks, more recreational facilities*

*Doctors office/surgery*

*Shared workspace for small businesses. Exercise pool.*

*Shared workspaces for business use or community hire. Community needs access to fitness/wellbeing but only needs one source in the area - should not duplicate and existing facilities that are sustainable*

*Pool sauna steam room*

*office and workspaces*

*Office & work units*

*equipment*

*Indoor swimming facility would be great, I think other sports are catered for at the sunart centre*

*An exercise pool is a good idea.*

*An exercise pool would be great*

*There should not be replication of Sunart Centre facilities but spaces which SC is not able to provide would be good - kids parties, visiting space for services, produce / craft fairs etc. would all be good*

*space for visiting services eg vets*

*Space for visiting services eg vets*

*Fitness equipment atm High life highland card only allows access to fitness suite 3 nights a week for 2 hours 5-7*

*Exercise pool*



*A swimming pool would be amazing as the kids here have very little to do or a indoor soft play*

*shared workspace for small businesses and a space for local producers.*

*A swimming pool would be amazing!*

*Hot dealing space. Better cafe*

**If you are not in support, or have additional comments about the Church Building please add any thoughts below.**

37 out of 158 answered

*Hopefully the building and grounds can be treated with respect, as generations of families are interred there.*

*Could be very expensive to repair then run it. how will it be funded. church still desirable for stuff like weddings, baptisms, funerals*

*It's a white elephant*

*Only if religious rubbish is not part of the condition of the sale! If you want to be mad, be so at home in private. Would make a great pub! Open all year. Community run?*

*need something bigger than a small function room for funerals and possibly weddings*

*I think to refashion the church building as a multifunctioning space would be a good outcome. Could there be some way services could be held at time, e.g. funerals etc?*

*community buy out unsustainable as will not generate enough funding*

*sunart centre could be used. costs of upgrade versus maintaining building, insufficient car parking*

*Should be kept as parish church, church to pay for upkeep*

*great idea. it would benefit the community more fully if not exclusively for church goers. Would love to see ambitions for paid posts to maintain its role and the building/grounds*

*might it be possible to still use the building as a church but also as a heritage centre where meetings could be held?*

*not enough car parking. costs of upgrading and maintaining building. alternative location for religious meetings and archive could be sunart centre*

*From my experience with museums, the church building looks to be ideal with spaces for permanent displays and temporary exhibitions, kitchen & wc facilities, office/workroom and possible first floor collections storage*

*The building structure is severely damp and successive people have tried to improve it. Apart from being a monument to teller, it could be replaced like the multi denominational church in Kilchoan has been*

*Might be a possibility as a heritage centre, but initial refurbishment costs would be massive and ongoing running costs could be prohibitive*

*Costs might be prohibitive*

*Feel we'd have enough with sunart centre and urram proposal*

*Concern with costs on ongoing maintenance*

*Church building mainly used for sunday worship etc*

*Great idea!!*

*The issue is parking, I support it as a multi-use space.*

*The church should not be altered as a religious venue*

*This is a great project and should be supported*

*I don't know the running costs or repair costs required. I'm in support in principle of the heritage group having a space and an exhibition space.*

*I think it should go to a private buyer for housing. IF the community were to buy it to keep as a church then that's a waste of our money - the church is one of the wealthiest organisations in the country, they don't need support. If it is to be used as a community space then we'd be better building a new one that won't become a structural liability.*

*I think it's important for the church to remain as a church, so if the community buying it out is the only*

*way to do this I'm in support of it. I'm not religious but I think it's important to still have a church.*

*Uncomfortable about community efforts supporting a religious institution. Not in the centre of the village. Old building will require a lot of maintenance and heating.*

*Older buildings require consistent maintenance and costs will only rise, a small redevelopment of a similar style building would be more cost effective and efficient*

*It needs to be able to bring in money or it is not worth it*

*Money could be spent elsewhere*

*I would like to know how it will be used as money perhaps better spent elsewhere*

*I'd like to know more about how the building will be used to generate an income to, at the least, cover its running costs and whether it would be looking to employ someone to develop the exhibits and manage the resource.*

*Additional non Christian worship space should also be on offer.*

*The church should found this not the community*

*I've voiced wanting to try and develop a Sunday school for kids to go to and encourage younger people and younger families back into the Church environment*

*I don't feel I have the time to dedicate to help but would happily support at fundraisers etc - as an 'exhibition' space would there be room for collaboration with resipole gallery? I know they used to have artist in residence space but needed to expand their gallery and lost that space*

**If you answered 'Disagree' or 'Not Sure' about the community acquisition of Longrigg Woodland, please indicate below your reservations:**

62 out of 158 answered

*commercial restock - longer time before returns.need to think about funding for maintenance of area longer term too*

*reservation is that we are being steamrollered into a difficult acquisition as a least worst option*

*cost. not sure how they would be used, value for money? Mountain bikes would need to be away from residential areas, conflict with dog walkers, noise, damage to natural environment?*

*access, could easily become an eyesore*

*Funding should be used to maintain existing woodland walk areas*

*not enough knowledge about the subject*

*i don't know enough about this project yet*

*after extraction, a waste land! unsightly*

*how would access be formed. there must be a reason it is being sold*

*road access to get timber out. longrigg road is in poor condition*

*woodland crofts/eco housing. Not sure this is the right location for housing or crofts. what is the quality of*

*the land for e.g.? Road infrastructure is poor. Big project not sure about community capacity to lead it. I'm not sure it's the best acquisition. FLS are not managing it as it is very expensive. we have plenty of woodland that we don't need to manage voluntarily and it is a massive task to expect of the community in the longrun*

*any available funding should be used to maintain paths and bridges in existing areas of community woods, fairies walk, ariundle oakwoods. Phemies wood*

*if purchasing woodland, priority should be given to promoting nature, wildlife and encouraging the use of the space in the most natural form*

*need more info*

*funds could be put to better use*

*As a relatively new resident, I don't know enough about what potential benefits may be. This is a relatively small area so no great loss to commercial forestry, but possibly significant impact to local residents if was commercial*

*This would be ok to begin with but would dwindle out through time. Plenty woodland already there*

*I would be worried it might end up as a "noose" around the community's neck. Make sure it isn't just for the benefit of Longrigg residents!*

*removal of timber?*

*Cost involved of getting wood out and setting up recreational and business ventures. we've had bridges out at ariundle for years now and not fixed! Depends who gets crofts! And how chosen/ Any outdoor space can be a learning space, plus long distance from school. Benefits a community in years to come, help needed now.*

*Who will manage it? What will you do with it as they are trying to phase out the use of wood as fuel? It is mostly a bog and difficult to do anything with other than grow trees*

*I do not know enough about it*

*Community has to have clear long term objectives, cannot strip the asset and leave a white elephant. Many of the land uses are already well catered/provided for in other woodland areas. Could potentially clash with existing businesses*

*If a large tranche of public funding is to be obtained for this acquisition, then there needs to be clear objectives and business plans. There also needs to be a realistic and honest assessment of the entrepreneurial skills that will be required. I do not have enough knowledge of the facilities to reach an informed decision*

*Not sure if there are people with the time and skills to run these businesses*

*Trees should remain as they are good for the environment. Road costs for access would be huge plus high maintenance costs*

*Straightforward sale*

*Not sure what the plans are for its future and whether I agree with them. Walking etc, we're not looking after the paths we have well enough. Lets get that sorted before taking on more. Housing - better to address existing ownership of houses and bring more into local residence, then do more building. We could use this land for environmental gain, not loss. Commercial restock needs to be sensitively done and not involve monoculture or non - native species*

*I Still can't decide on the pros and cons!*

*Access? Also 70% of crofts in sunart area are not worked*

*lack of access*

*Longrigg woodland needs to be extracted all in one go, and definitely NOT over years and years. There are professional woodland companies that will do this with minimum disruption to residents. I would like to see native woodland trees planted on the ground. We have plenty FLS walks around Strontian and now they have no money to repair the walkways or maintain them satisfactorily. All we see are notices! A proper pathway on the main road would be good so people can use the walks we already have and walk in safety.*

*The FLS plan for Longrigg woodland is clear felling. The residents of Longrigg road should NOT be subjected to 30 years or more of piecemeal timber extraction with all the disruption and noise pollution that will bring , as per community plans for the wood. The longrigg woodland should be clear felled then restored with native woodland. There are sufficient paths around strontian which are already falling into disrepair due to FLS having no money to maintain them.*

*This will be a very costly project for the community with no clear access available as yet for timber removal. I feel it is a huge risk and not one that our community needs right now.*

*There is already enough land given to timber production in the area*

*I am not sure about the economics of timber extraction or whether it is suitable for housing. I can see it as a community resource.*

*Not sure indicated I don't have enough knowledge to comment on this use.*

*No reservations just unaware of the consequences of all the different options*

*FLS are selling the Longrigg woodland as it is not commercially viable for them to manage it as a commercial forest, so why would we want to make the same mistake by replanting it in the same way.*

*Inaccessible and far away from village centre, do not see community getting value for money/effort out of the woodland*

*Not sure about more commercial woodland as there is plenty about - possibly ok if it will help the finances of the project but would prefer mixed woodland*

*No reservations*

*There's enough places for walking, hiking, cycling on Ardnamurchan as it is - we don't need to artificially create more.*

*Just don't know enough about how this would help our community.*

*I know have enough knowledge on peatlands to answer the question appropriately*

*Outdoor learning doesn't necessarily need a specifically demarcated space. Transport costs to schools are currently prohibitive and therefore having something like this so far from the village centre and schools (outwith walking distance) might mean it was underused, as with the woodschool in Acharacle.*

*I don't feel that commercial timber production is compatible with a lot of the other activities and resources that I support.*

*There are already lots of walking opportunities locally. Not worth investing in these specifically. Fine as a side effect from other uses.*

*There is Croft land here that isn't really used already*

*I feel we should be more ambitious in the short/medium term rather than fall back on commercial timber production with the negative impacts on the ecosystem and no real community value*

*There are so many other forests around it would be better to use it as something more beneficial*

*The outdoor learning in Salen seemed to be little used*

*Plenty of alternative walks/rides/woodland, Sunart already very well served in this respect. Feel*

*community woodland is neglected, could be much nicer and meet some of these needs. Longrigg is really just a money making exercise for timber.*

*Sounds too big a project. Also cost, access*

*There are already plenty walks and woodland areas for recreation, ariundle, phemies, community woodland, fairies walk etc*

*I think it would be very difficult to establish serviced house plots in the woodland area, but am not sure.*

*With regard to outdoor learning space we already have 2 wonderful woods which could accommodate outdoor learning. The cost of access for affordable housing would be massive. I think the community would be strengthened if the houses were built around the existing village instead of spread out and perhaps more isolated.*

*More info required on timber extraction and regeneration methods*

*I would want more information about timber extraction plans and replanting plans to ensure environmental sustainability, limiting damage to wildlife, habitat and biodiversity etc.*

*There are already woodlands and walks already in existence not very well looked after so maybe funds would be better off being used there.*

*Reservations on the impact on the forest for eco-housing projects.*

*I'm not overly sure of the exact area and details of the land proposed*

**If you are supportive of plans for a community buyout of Longrigg Woodland, please tell us why. If you have suggestions for things that you would like to see incorporated into development plans please add them here too:**

42 out of 158 answered

*Strongly believe anything developed should be of a benefit to the community as a whole, or to preserve natural resources*

*In everyone's interest to maintain our woodlands and social interest areas*

*proper pavement leading out of village*

*increase in available property for the area*

*woodland crofts/local housing is what is needed in this community. a low volunteer/management solution is needed*

*I would like to see a cooperative firewood. whatever is finally chosen I think it must be taken into consideration that Longrigg is a residential road. activities mustn't impede on residents*

*not sure that peatland restoration fits in with most of the others*

*Bushcraft. Sustainable woodland skills - charcoal burning, furniture making, etc. Re connecting city kids with their environment, sustainable living, and consequences of litter/pollution.*

*I think it could open up the area and get people interested in it. we are a rural community and as such everything that supports our lifestyle which presumably we have chosen would be welcome*

*Important to retain and improve our natural environment*

*community firewood at reasonable cost must be a priority*

*all proposed plans sound great*

*initial project with paid work opportunities to provide community firewood - followed by restoration of native woodland/peatland/biodiversity project - would be a long term investment for the environment/climate*

*local land and walks should be available to the local people and tourists*

*any community project to purchase woodlands is positive*

*funds could be put to better use. Not enough info*

*Forest school/woodland skills/woodcraft workshop*

*Main reason for support is that we would have control of excavation of wood rather than leaving this to a commercial company. The amount of lorries carrying timber would hopefully be less.*

*Maintain bike routes for young people*

*I live in Longrigg Road so removing the trees behind our property will provide more light. Plus, I think, this is an asset that is best held by the community as a legacy for future generations i.e. beyond 100 years*

*It is important the community takes ownership of local assets & resources as public agencies have minimal commitment to the area - the community must look after itself, and increase its self-sufficiency and resilience.*

*Any prospect to develop the area and allow younger residents to experience the activities that those outside of rural Highland do would be good.*

*I am supportive of the plan to buy Longrigg woodland so that Sunart can have the benefit that comes with*

*the disruption of transporting many tonnes of timber on our local roads and then is in control of how it is redeveloped and the enhanced environmental and community uses it can provide.*

*Community land ownership is important. Without we don't have control*

*Opportunity to generate employment*

*Native woodland which is used for sustainable purposes as well as supporting biodiversity. People working in and connecting with the woodland.*

*I think that the woodland initiative will be a fantastic one for the community to be involved and will become a fantastic asset for Strontian. I would like to thank all those involved for the huge amounts of time already invested in taking the project to this stage. I know that this sort of initiative does not happen on it's own and takes a lot of volunteer time. Thank you very much.*

*Good accessibility for the disabled. Community owned campsite? Parking and ccessibility to Beinn Resipol?*

*I feel we need to make the most of the natural resources that we have and recognise the value in un-logged woodlands.*

*Housing is a big issue and this would provide land for affordable houses.*

*Consider eg beaver or wildcat release into woodland to increase visitors / improve biodiversity and wildlife*

*Better resilience for the community and retention of young people*

*It's great space with huge community benefits*

*Access and biodiversity - Community and climate action at a local level*

*There are a great number of possibilities for Longrigg to bring benefit to the local community, perhaps too many at this stage, so I'd like to see a realistic balance of leisure/commercial/residential agreed by the community.*

*The main purpose should be to provide a revenue stream for the community and some local employment/management*

*Biodiversity and broadleaf planting, paths, could all help raise awareness of our environment and the benefits it brings*

*Preservation of a natural resource which will benefit local and visitors needs and aspirations.*

*Any community controlled space is a good thing. The opportunities for income generation along with improved environmental / biodiversity / wildlife / educational provision should be supported.*

*It would be a shame to have commercial timber making use of the resource if community could benefit instead.*

*I am in favour of positive improvement for community benefit.*

*Crofts and plots for families in the area to build on would be brilliant and encourage people to really set roots here.*

**Sunart Paths: Do you have recommendations or suggestions about new routes you would like to see if funding could be secured?**

71 out of 158 answered

*ardnastang to village beach route*

*If possible a footpath from post office to the jetty would be good. at the moment theres only grass verges not good for pushchairs/wheelchairs it's a popular walk but with increased traffic - works vehicles - isn't always safe*

*NOt sure we need more routes*

*paths group no longer seems to function! Possible new paths, footpath from monument park into village, footpath along side of strontian river from church as far as possible*

*Would it be possible if funding allowed to have information boards on the walks depicting the local flora/fauna?*

*Back road/river path needs to be resurfaced asap*

*Existing routes need to be maintained before considering spending funds on new routes*

*Better maintenance of existing (e.g. bracken trimming on faeries road)*

*anything to help the riverbank walk less boggy, it seems to be widening due to people avoiding boggy parts*

*outlined path to Ben Resipole*

*forestry community walks are unattended. Fairies walk best in area but sorely neglected, overgrown, bridges condemned, insurance liability*

*upgrade the coffin trail to polloch*

*the shoreline from strontian bridge to ardnastang bay*

*would be good to maintain the existing routes mentioned below. Phemies, fairy walk, ariundle*

*priority needs to be given to restore the walks already here which need maintenance - new bridges etc*

*Refer to answer in 21. I am informed by a member of this group that it has not been meeting recently and there is little happening*

*money should be used for upkeep of paths already being used. Carnoch over hill into village - meet with faeries walk*

*haven't been here long enough to know yet but would always support new footpaths*

*no point in making new paths if existing ones can't be maintained*

*back road from village to drimnatorran bridge requires upgrading/resurfacing. it is currently a quagmire*

*fixing the bridge on the Ariundle walk so we can do a circular walk again!*

*From ardnastang beach following coast around to join the path from kilcamb. It would have to take a higher route in places*

*new routes would be good*

*no*

*Just give back proper access to those we have - Ariundle!*

*safe path for pedestrians around monument heading towards jetty. this is a blind spot for motorists so walkers have to be on the wrong side of road. Tide in*

*means no possibility of using beach instead of road.  
Any hope of path on monument and jetty side?*

*Would like to see a path created from part way along  
the existing track extended from longrigg, down to  
anaheilt*

*No*

*The volunteer group should be encouraged but the  
priority should be to put pressure on FLS to repair the  
bridges on the fairies road*

*FLS should get the two main bridges of fairies road  
replaced and reopened*

*Corantee path to mines*

*New routes and proper maintenance*

*No! Look after what we already have before adding in  
more paths. Liaise with and support other local path  
owners e.g. high road, ardnastaing grazings. Stop cow  
damage to fencing and protect people from cows. Too  
many people have been hurt by the cows.*

*Reinstatement of bridge at Ariundle, and concern r.e.  
state of bridge above gates on way to lead mines past  
Ariundle. Whose is it, who is responsible, important  
heritage trail*

*An upgrade of the track on anaheilt grazings from  
water tanks (old) to the top of coranter*

*New routes are always an asset to a community*

*Beach path needs work*

*Routes into Longrigg woodland for access to  
viewpoints, to access provide access to learning facility  
areas, and places of interest. One access can be close  
to the common grazings path and provide a  
continuation option for people. A route from by  
Longrigg House down through the woodland area to  
the road, the A861; other paths from Longrigg Road  
e.g. common grazing proposed path, below the  
Longrigg Manse and through the common grazing  
below the Free Church house.*

*A footpath along the shore in front of kilcamb lodge to  
ardnastaing beach*

*Shore path to Ardnastang*

*River crossing of the Strontian river at Scottish water  
intake; footpath connection from graveyard to Faerie's  
Walk.*

*Focus on the routes we have at present.*

*Remove or replace all wooden outdoor furniture in  
Strontian Community Woodland. It's an eyesore.*

*Wide enough paths to allow mountain bikes to use  
alongside dog walkers. More recycle /waste/dog mess  
bins?*

*A link between Ardnastaing beach and Kilcamb along  
the shoreline. A midway link between the High Road  
and Anaheilt say somewhere by the Church.*

*Link patty to village from Carnosh and path from jetty  
to village*

*From fairy walk along to Carnoch heading east*

*The back road from church bridge to council yard is  
pretty muddy. It would benefit from some investment.  
Use stone to create a path with a camber so water can  
run off.*

*A path from Dal Na Each over the fields to the high  
school so children can walk or cycle a shorter distance  
without the traffic*

*Routes from Lonrigg to Beinn Resipol, perhaps.*

*Join Carnoch plantation to Faeries Road*

*I feel that we need to focus on repairing what we have  
before building more. There are still two bridges out in  
the Ariundle woods and plans to remove boardwalks  
from Phemies Trail.*

*A safe path from Ardnastang to the village for walking  
and cycling.*

*extension of path to Ardery wildlife hide, coastal  
walkway alongside the loch*

*A pathway along to the post office along the coast  
road for enhanced safety*

*I am in favour of new route but don't have particular  
routes in mind*

*New path from the community woodland to the top of  
Tom an t-sithein and over to Carnoch.*

*Ardnastang beach path needs to be linked to the  
village as there is very little parking. The road is  
dangerous to walk along.*

*Fix the bridges in Ariundle! Longer distance 'high'  
route to Acharacle avoiding the road.*

*Just keep existing routes up together, already  
boardwalks and bridges are being neglected.*

*Ariundle walks maintained*

*Joining up existing paths and trails to make circular routes (e.g. trails from Liddesdale through forest eastwards to join hydro tracks and on to the head of Loch Sunart or, when FLS extend their paths, Carnoch through to Ariundle) would be a better option than developing whole new trails. Securing the bridge to the Lead Mines above Ariundle should be a priority along with ensuring the two bridges in Ariundle / Fairies Road are reinstated before they get forgotten.*

*We have lovely walks so maintaining these would be priority e.g. community woodland viewpoint is inaccessible now*

*A link along the shore from Kilcamb to Ardnastang to provide a circular route from the village round by longrigg, phemie's wood and/or the High Road.*

*Perhaps a linkup to the mines from the High Road, and perhaps from Kilcamb shore round to Ardnastang Bay.*

### **Sunart Men's Shed/Craft Hub:**

**Please add any comments or suggestions about what you might like to see this space used for at other times during the week:**

40 out of 158 answered

*tool library or small goods purchase open during evenings to increase access to young people and those who work*

*a potting area. people supply own seeds compost etc. not everyone has space to plant seeds and pot up etc*

*not the ideal space for wood or metal workshop. better suited for crafts*

*I am the DIY woman in our household! For me the 'mens shed' is a complete non starter! I would love to be involved in a community growing food production polytunnel venture. what about helping out at ariundle centre!*

*rooms too small, ceiling too low for all but the smallest mens shed projects. perhaps better used as a craft/meeting place and a more suitable place found for the mens shed*

*"men's" Really?? I do all the DIY in my house. totally sexist and offensive. Just call it the shed!*

*whist drives, line dancing*

*footpath from Pharies above school down to backroad*

*More routes which could be used for access / cycling. Eg to join up outlying areas of Sunart - Resipole, Polloch etc without having to walk or cycle on dangerous stretches of road*

*Ardery lochside to hills Safe footpath / cycle path from Resipole into Strontian, not necessarily following the road*

*Ardery foot path from lochside to hills. Footpaths / cycle tracks from Resipole to Strontian, not necessarily alongside the road, to enable safe walking or cycling access.*

*A route through ariundle to Ardgour would be fab but please first work on fixing boardwalks and bridges that we already have but cannot use!*

*any small group activity but men's shed should be given priority due to delays after moving from strontian hotel base*

*more workshops - a wet weather place for locals and tourists*

*education purposes*

*not sure*

*tool hire*

*Pottery*

*Toward forward*

*Extend men's shed to weekends if poss, or better still in evenings. Really want to get involved but can't because of work. Suggest community crafting evenings esp in winter, e.g. bring your own project and some food/drink to share. DIY courses and workshops would be good. E.g. tool repairs/making furniture/car mechanic course*

*Used if possible*

*I like to see it made a multi use/ functional space. Therefore, I suggest the area behind the greenhouse*



*and through to the area adjacent to Lea Cottage be pruned and maintained; landscape around the greenhouse so mowing can maintain the grass verges; cutting the hedges to 4-5 feet in height i.e. the one by the path and the one on the boundary with Dailmhor House. Finally, clearing the site, levelling and extending the area to beyond the electricity pole, installing a larger second shed to house the machine tools.*

*Needs to be more than a "mens shed", open to other groups.*

*Would definitely prefer this to be opened up to females as well as males.*

*Education for interested people who may not have the skills so they can take an active part*

*Look forward to it opening*

*Community composting facilities,*

*I would like to see the greenhouse being used more*

*Think it's a great idea. No suggestions though.*

*Painting*

*Space for makers/artists to use.*

*Workshop space for small businesses eg jewellery, wood turning etc.*

*Woodland projects, meeting place for walkers*

*Ugly building. Needs timber cladding to hide it.*

*Gardening centre eg a place to repot plants & use the green house*

*composting area for local garden waste*

*Hire for local people looking to utilise tools not generally owned at home. Bike maintenance facilities and tools similar to Lochaber Environmental Group's Bike Kitchen.*

*Training courses for basic woodworking skills.*

*Repair cafe, workspace for artists / makers, skill sharing space.*

*community growing, art area*

*Community growing, art area.*

*Utilised by the schools for outdoor learning or physical activity/ mountain bike trails*

*A fab lab*

*Would there be potential to mill our own wood. Lochaline has a community wood mill?*

*Some sort of maker space, or community facility such as the tool library 'clachworks' in inverness*

**Please use this space for any comments or suggestions for the Agricultural Society to consider regarding a permanent shed placed on the show field:**

41 out of 158 answered

*A separate function space might take away use of the village hall*

*Would it be cheaper to buy our own marquee?*

*knock park @ lochaline a good example*

*A company near gairloch are using rhododendron ponticum to make high calorie fure. RP is a huge problem on ardnamurchan*

*Could this shed be a more multipurpose place, perhaps providing a suitably large village hall.*

*Not going to be used often, sunart centre and village hall are adequate*

*used to use village hall*

*use local timber and labour*

*would they consider a covered but open access seating area for gathering all year. this could be a useful spot for all age groups/users to gather informally*

*The show dance could be held in Sunart Cente, a new village hall or wherever*

*can this combine with the new village hall to save having two new buildings less fundraising and more economical*

*I think this is a good idea*

*rentable outdoor workspace for small businesses*

*Unsure about timber cladding in our wet climate. Although metal cladding would intially be more expensive, would be a lot more durable*

*a shed would be useful if the weather was bad*

*Will access to the building be limited to show dates or generally open to us all?*

*Only reason for not sure is financial. Feel a village hall should be an absolute priority as there is currently very little going on in this village*

*A properly floored building could be the basis for a replacement village hall but would need to be designed as such rather than just a "shed"*

*Could be a building rather than a shed, and could be the village hall*

*Could you buy a high quality saddlespan marquee to use on the showfield by the community but which could be rented out when not in use?*

*Could this not double up as the new village hall?*

*Covered area (ie a roof on posts) could be installed where the show dance tent is usually erected - could have a wide variety of wet weather uses. Potentially combine with the proposed building referred to in the previous question.*

*Social spaces, a bar, somewhere to have gatherings year round.*

*Drumnadrochit have a community owned toilet block. Donations to use but never locked. They are clean, warm, and modern. Could we have something similar?*

*My concern would that it looks industrial in the middle of the village. I think it would be a great asset if it was properly funded, was aesthetically pleasing and could be used more fully for other functions or even as a replacement village hall.*

*Definitely a good idea. It would be great to have a permanent space where ceilidhs and events can be held. With facilities such as toilets, kitchen and and enough space to be adaptable for different events.*

*Could this building be used as the village hall and combine those needs into one structure?*

*Heating for use during the colder months may be an issue.*

*An awning / covered roof open sided space would also be useful.*

*Could be better utilised for additional purposes such as a farmers market once a month, local sports day,*

*outdoor entertainment (school theatre productions) summer fayre etc*

*I don't think it will get enough use*

*is this not a flood plain?*

*Is this a flood plain?*

*Who maintains/manages this? Grants/funding runs out and left to waste.*

*There are already a number of community spaces available around Sunart that are underutilised without building another. While it will reduce the cost of hiring a marquee, how many years will it need to be used for in order to be cost-beneficial? Who currently covers the marquee hire costs? Or does the Agricultural Society run the show at a loss?*

*any "building" should be in-keeping with the area.*

*A small pavillion type building perhaps*

*Couldn't you buy a good saddlespan marquee instead?*

*Personally I struggle with this one, I see the need for a building but the field was gifted to the village community by the Mr and "nurse" Rankin on the condition there was to be no building on it so whatever happened in the village there would always be a green space for people to use and kids to play in etc. Seeing all the other fields and green spaces in the village slowly filling up with buildings I think the community should think hard about casting aside someone's altruistic act which now looks quite forward thinking. If there is to be something there I personally don't think it should be constructed as a permanent structure.*

*Should be as basic as possible to keep maintenance costs to a minimum*

*A space where local producers can leave their products to buy.(vending machine type with storage for products and easy way to buy) Farmers market could be organised here too.*

*If it could be some sort of semi-open pavillion type thing then it could be used at other times for things like the Christmas market (which was then be less weather dependant) and options for things like food festivals/more local produce markets etc*

**If you require assistance with day to day living what sort of help do you require? Answers for 'other' option:**

*coping at present but assistance likely to be required in future*

*Pain management help - physically and psychologically*

*Continued support from cafe sunart*

*It was difficult to find help (paid) for my mother who is 88, disabled and needs help cleaning her home*

*Part time paid help with domestic chores*

**What would you say were the main drivers of the mental health challenges you or they have experienced?**

*Answers for 'other' option:*

*work related*

*Global pessimism, climate change, habitat loss*

*Delirium*

*Employment*

*child birth*

*life*

*long term issue*

*Covid and lockdowns*

*Partner's failing health*

*Abusive relationship*

**Please offer any other comments or suggestions about travel and transport that you feel might help the residents of Sunart:**

*36 out of 158 answered*

*more regular bus service*

*push on with new ferries or fixed link*

*i would strongly oppose and actively campaign against any project to build a bridge to replace the ferry*

*two buses a day*

*more regular bus service, need to get to fort william by 9am and leave after 5pm or it's no use for getting to work*

*a car scheme the same as fort william*

*I am in favour of the car club scheme and think it's a great idea. I am just not in a position to use it at this time*

*encourage active travel e.g. walking and cycling*

*electric car charging points*

*I don't drive but i support the idea of a car club*

*Having made use of the hospital car and volunteer driver more than once - it's very good. But, could do with a blue badge - hospital parking is full!*

*maybe more buses to fort william?*

*Very difficult to travel to acharacle and get back in one day on public transport. Impossible to travel with a pet*

*on public transport. Dogs stay in one area rather being a companion on trips to other areas*

*Bus to fort william two times daily instead of once*

*Young people, for access to and from work where no transport*

*Would patient transport subsidise a hospital car*

*Dedicated Facebook page for posting if you need something picked up from e.g. Fort William, Inverness for someone making that journey already to help with*

*I'd love to see more effort to encourage cycling and walking to the school. Could the SCC fund bicycles for families?*

*Need a usable bus service - as a minimum it should allow people to work in Fort William and travel via bus; current service is no good to people in employment due to timings. Car club should not be EV only, the primary environmental benefit comes from the sharing of vehicles, so even conventional ICE vehicles will bring immediate benefits. More widely, a bus connection from FW to Stirling should be established, as Stirling is a hub that would allow onward travel to Dundee, Edinburgh etc. Would benefit students & young people, plus tourists. Crazy that all journeys to central belt have to be via Glasgow currently.*

*A community based collection app. Where locals going to Fort William can collect items for others and reduce trips.*

*Community car club would be a great idea*

*Electric Bikes*

*A bus service that returns from town/the ferry later in the day*

*A bus for folk working in FW. Reaching FW at 9 and leaving at 5.30.*

*Electric car would be great, as would a larger vehicle / van.*

*An additional bus route would be great as opposed to one outgoing daily*

*Road maintenance is critical for transport in the area, Ensuring bus services are retained and improved*

*Low cost rapid electric charging points in the village*

*Tighter enforcement of overnight parking by Loch*

*As the area covers quite a large geography any community transport solutions need to take into account being able to access them - eg we live 5 miles*

*from Strontian so would need transport to get to a shared car. This should be considered - maybe an employee / volunteer who is able to deliver the vehicle? A car pool / lift sharing scheme run alongside?*

*We live 5 miles from Strontian village centre so although a car club is a good idea there would be potential issues in collecting the vehicle and returning it.*

*Any improvements must go beyond the centre of Strontian to outlying areas of Sunart*

*A very useful scheme that would benefit a lot of people.*

*Not for the car club but a better bus service is severely needed*

*The health of vulnerable people should not rely on the volunteers, this should be a job creation, an ambulance service for the community, paid work.*

*Bus routes into fort William at times for people to commute so that young people, single car households etc could have more job opportunities (e.g. get in to FW at 8.45 and leave at 5.30/5.45)*

**If you have any other thoughts about producing or sharing food and produce locally please use the space below for comments:**

20 out of 158 answered

*foodbank as described in community pantry would be more practical and easier to run. maybe with a very small fridge option*

*neighbours are happy to use any surplus we have*

*was the land opposite forestry office not bought for this? As a community i feel we should be contributing to the lochaber foodbank that way if people are feeling the pinch they could use this. I don't think people in this area would want their neighbours to know their situation. Also depending on who runs this. confidentiality would be needed*

*There is already an app called olio which does this. I would be more interested to see a community tool/equipment sharing group, such as garden implements, specialist cleaning machines, ladders etc*

*I would be willing to plant more fruit trees with a little help, if I knew the community wanted to produce. I would need help with picking too. Very successful with*

*apples, plums, as I am above the strontian front pocket*

*The community has an allotment which is unused in the community woodland behind lea cottage*

*The idea of sharing surplus food through a community fridge is commendable but care must be taken that it does not have a negative impact on local businesses as this could prove fatal for these enterprises*

*As long as no negative impact on local retail businesses*

*Community allotment and community poly tunnel would be ace. Needs co-ordinator to really be successful*

*As per earlier response, those with crofts who are not cultivating them (as required by law) should release them to those who will. Community should be proactive in reminding people of their responsibilities*

*Croft reared meat would be ideal, but how do we do this in an affordable way for local residents?*

*With the decrease in the security of the UKs and worlds food supply chains from the recent pandemic, climate change and political instability, it is important that as a community we look at improving our own resilience in this area.*

*Some agreement about individual choice when looking at sell by/best before dates. So much good food is wasted due to these.*

*should be coordinated with transport where possible*

*Sharing food that is not properly labelled can be dangerous to some people*

*I don't think there are enough people in the community willing to participate to enable this to be a success.*

*Perhaps planting a few apple, pear or plum trees for residents to help themselves*

*Access to the sharing would need to take into account transport options.*

*Many examples of those fridges around the world, this is a great idea, people needing it can help themselves to quality/fresh/affordable food discreetly. People cooking like myself and used to food charities in my home country can help.*

*Willing to pay for local eggs especially with current egg shortages*

### **Social Events: What would you most like to see happen?**

74 out of 158 answered

*Something for variety of ages*

*Ceilidhs, cinema/film clubs, quiz nights*

*more bands/variety of music styles coming to village plays, theatre, local talent, stars in their eyes!!*

*all of above, family events in the village hall*

*ceilidhs*

*ceilidhs buns suppers*

*On a purely selfish level, something not overtly "scottish", now and again! We outsiders find it difficult to belong to a cultural identity we haven't grown up with or find it excludes us subtly from adopting it*

*return of whist club, peninsula carols, cubs, beavers, social events in general*

*friendly get together*

*Lice music at the school, film nights*

*live music, not ceilidh or trad. theatre*

*quiz nights, music nights*

*whist drives, bingo, line dancing, stars in their eyes*

*hall and dail mhor renovated*

*music and drama*

*informal opportunities like the christmas breakfast but maybe at diff times of year and all welcome*

*This should be organised by young people. more professional groups needed such as music/opera/dance - scottish traditional bands also films as we used to have*

*quiz nights, whists*

*quiz nights*

*music nights, ceilidhs, whists*

*the school back in use for film/concerts*

*Musical performances - a variety, not just traditional Scottish*

*Outdoor film screening?*

*whist drives, stars in their eyes, ceilidhs, burns suppers, music nights*

*Ceilidhs, drama club*

*quiz nights, music nights*

*social events in the winter months*

*quiz nights*

*Film night, music nights, indoor bbq, weekly lunch club, easy meals to make and cook*

*The old monthly film night return, More music concerts like in Glenuig, Ardgour and Lochaline, plays, theatres etc*

*Advertising of events using platforms other than facebook. Better use of notice board in front of the shop*

*Local hospitality businesses should be considered as the first option for such events where possible as these businesses need the revenue to remain viable - use it or lose it!*

*These activities should be run by local businesses where possible. They need the revenue*

*Not sure. No value for me personally but see it would be of great value to others*

*Quiz nights*

*Quiz nights, cinema/films, craft workshops*

*An entertainment community group to cater for whole area*

*Anything that brings people together again*

*Films in the sunart centre. Art or drawing classes in the Sunart Centre.*

*More concerts and films in the sunart centre*

*More events in school hall/theatre such as nordic fiddlers etc*

*All examples suggested in film nights*

*when events are running again it will be local groups running them as fundraisers for their group/cause. If another group is set up to run such events, it reduces the ability of existing groups doing this for fundraising. If the hall were back open more would be happening. Most groups cannot afford the costs of renting the Sunart centre*

*Ceilidhs, more musical events*

*More Highland events*

*Theatre groups visiting, comedy nights, multicultural experiences, book readings.... All and every form of entertainment*

*Community games/competitions - University challenge, beetledrive*

*Burns supper, live music, ceilidhs, film club, quiz night*

*Ceilidhs and traditional music*

*Quiz nights, themed nights, music nights, dances*

*Quizzes, Ceilidhs*

*More live music, more events for the children and teens*

*More music events*

*A community choir*

*Local / Highland / Scottish Bands*

*Dances/ceilidhs*

*barbecues, social events based around water activities, bring and share community meals, fundraising events eg coffee morning*

*New and more volunteers with A little more harmony overall*

*Return of regular cinema night*

*Community sustainability in a overall plan so that planned activities/projects could be checked too be inline with the plan objectives*

*Quiz nights*

*good acts on tour, why not come to Strontian*

*Good performers at Sunart Centre like we used to get Ceilidhs*

*Ceilidhs*

*quiz, music, theatre, cinema*

*music, games, quizzes*

*Games / quiz events*

*Quiz nights*

*Village hall being made available for use again*

*Clubs and activities for young and old*

*CINEMA events*

*Family ceilidhs. Open mic nights. Social events in the afternoon, rather than the evening might be better attended by families with children and older people. More events at the weekend, during the day*

*Roller derby*

**Thinking about what would make Sunart an even better place to live, complete this sentence. What this village needs is a...**

*kick up the bum to restart all good attitudes and helpfulness after covid and the sadness of last few years*

*more frequent bus service*

*better public transport network*

*small skate park. good example at whitby*

*retraining younger people*

*village hall*

*whole community spirit*

*Pub, vet, optician, would be no need to travel off ardnamurchan! A hairdresser too.*

*a lively active group of committed christians catering for young old and everyone in between*

*village hall*

*recycling bins, large bins for household items that cannot be put in normal bins*

*regular transport link to fort william and more employment opportunities*

*More cottage industry so that the kinship will stop turning into yet another retirement village*

*more accessible housing. less holiday lets*

*better transport*

*new gp practice*

*more spread out age gap for residents*

*we as a company must try and keep people here*

*community windmill*

*residential care home, village hall, doctors surgery*

*swimming pool*

*small refuse skip. more bins for tourists in village*

*pub*

*proper pub*

*highland autonomy*

*studio units/workshops for artisans*

*Community cafe? or other gathering space*

*BMX or skateboard area for older children. could the old school playground be used for this?*

*training opportunities for school leavers*

*more for young people. A skate park? A better play park? A 'hub' for them to meet and hang out together, more than youth club once a week*

*community that embraces all that it has to offer*

*More housing to encourage more of a work force age group into the community so we can cover the local job gaps and more opportunities for people to work here without having to travel*

*Community cafe, benches, None on east side of village as of yet*

*Community company that listens to the community and not just the wishes of it's directors which has happened in the past*

*A better bus service*

*More in the way of concerts, film nights etc. It is way behind all the villages nearby*

*Better way of promoting events and activities than facebook*

*Local permanent residential care facility for the elderly*

*Permanent residential care facilities*

*Chemist, physiotherapist, repaired roads, garage*

*A permanent senior citizens home*

*Social events hub, events on a frequent basis.  
HOUSING.*

*more local entertainment, and more care for the elderly covering the Ardnamurchan area*

*Speed limit of 30/20 mph from the war memorial to the bridge at the bottom of Ardnastang. The village is a nice size as it is and needs to be kept as a small village - I dread it getting too big/drastically changing. A proper toilet facility would be nice too.*

*Strontian is fine as it is, a small rural village. No need to turn it into a large village/small town.*

*More families with school age children*

*No additional comment*

*a way to stop people buying houses/land, being granted planning permission for additional properties then selling them off for even higher prices to make a profit.*

*Better gym facility/ bakery*

*A really good cafe*

*more opportunities to come together and realise/remember how good it is here and how lucky we are to call this home.*

*....healthy demographic, with a mix of locals and newcomers, but where the latter are more diverse in terms of age, social background and nationality than at present (ie reflective of the wider world!)*

*Bus service to Oban.*

*a broader range of housing and economic opportunities. It is becoming gentrified and this is changing the character of the area. We need a better range of housing to encourage a more diverse (age range, socio-economic status) population and a wider range of economic opportunities and employment.*

*What this village needs is for people to work together more, to volunteer their time more which will boost their sense of pride in this community.*

*Community sports centre with pool.*

*Skip back again*

*A functioning village hall!*

*Community spirit*

*Sense of fun and community togetherness, possibly with a return of other community events such the duck race, village sports, the hill race or new ones like a boat race.*

*Fixed link bridge to the main services and upgrade to roads*

*Good broadband system*

*Village hall or communal community space more cosy than the Sunart centre. It also needs a recycling/charity shop and another renewables scheme as the hydro has been such a success*

*Revamp*

*Wider community committee which incorporates representatives from all the various organisations which are operating locally to act as a coordinating body. This will make sure no duplication of effort.*

*Nice community space for events.*

*An increased amount of jobs and activities going to offer more opportunities*

*Community hub*

*Village hall with more community events*

*scheme to increase the availability of affordable housing.*

*More affordable housing/new housing in general*

*Functioning Village hall to bring everyone together again*

*an attitude like Hamza Yassin!*

*swimming pool*

*Central community hub*

*bit more sunshine!*

*Way to access the renewable electricity we produce.*

*easier transport links*

*More renewable energy*

*Improved transport services*

*Swimming pool*

*Sustainability Plan and projects*

*Affordable housing*

*Affordable housing*

*New village hall*

*Good affordable housing and more opportunities for young people to stay*

*Regular litter picking groups...it's getting worse. As an individual, I do what I can but something which is more organised would be more effective*

*faster internet, less litter*

*bakery*

*Refresh*

*Other than more help for the elderly or sick people and maybe more low cost housing for young people I like it the way it is 😊*

*Gym*

*More local trade services; electricians, roofers, plumbers etc*

*reduction in second home ownership by people who do not reside here / use their home for more than a few weeks a year.*

*Better shop, fresh bakery and deli would be lovely*



*Bigger pub*

*Upgraded play park including some cover.*

*Improved play park*

*Better bus service and community health centre.*

*greater effort to include the outlying areas*

*better transport systems*

*transport solutions to connect the outlying areas of Sunart together more.*

*Affordable and accessible fitness suite*

*A community hub with decent village hall that can hold decent sized events and available for hire by members of the public*

*Open mind and let the people who want to make a positive difference do it . Some people think they own the village and make it difficult to implement change.*

*A place for kids to play indoor and out, a better stocked local shop, a pub that opens during the day, a cafe that doesn't cost a fortune for a bacon roll, better and more access to the highlife highland gym*

*plan*

*good community hall/centre with more community council members/bigger team of people.*

*Clear website which tell you exactly what committees are in charge of what and who is on each so if you're looking to get involved/for help it's easier to find out what available (e.g. how do I access the hardship fund? What's the difference between the community company and community council)*

*McDonald's*

#### **Any other comments or suggestions or concerns about living and working in Sunart and its future development?**

59 out of 158 answered

*Since covid a lot of info is spread through small groups and doesn't always get out to everyone. Facebook is good but things are sometimes missed*

*big build up in traffic using ferry, disorganised queues longer waits and sometimes needing to take long way around. hard to get to appointments on time. need rubbish bin outside post office*

*lack of access to existing village hall having detrimental effect on the health and wellbeing of the community csn pressure be put on council? community owned housign for long term let would be a great aspiration*

*don't build a bridge, retain and embrace vocational historical and cultural education*

*it's good that young families are moving to strontian. we need a balance of ages of residents for a healthy community*

*safety of main roads. 30mph from traffic grid and longrigg, bumps as there is no footpath for pedestrians*

*The possibility of a bridge - please dont do to ardnamurchan what bridge did to skye. The reason it maintains it's unique character and biodiversity is*

*because it takes effort and motivation to get here. As a phychologist and environmentalist i appeal to you to not allow the urbanisation of the lost wilderness left in the united kingdown by the lazy and exploitative who would welcome a bridge as a right*

*the feel of the village has changed in the last few years. We need to work hard to restore what has been lost*

*Having arrived as an incomer over thirty years ago, i hope i never have to leave and live elsewhere. I think as an incomer you have to respect the community you are now living in, they managed without you before you arrived so it can take a while to become accepted, but when it does happen, and it should, it is just GREAT!*

*if a bridge or tunnel is build the roads will need to be improved to cope with increased traffic. Also charging points for electric cars.*

*More should be made of our heritage e.g. sir humphrey daves, thomas telford, lead mines, floating church (artefacts available), war graves, north argyll historian deceased, iain thornber. Contribution weekly to lochaber times*

*new children's playpark, more job opportunities*

*This is our first time living in a small community, and i really feel a strong sense of community and people helping each other*

*Sunart is a good place as it is*

*too much talking by council, not enough action! e.g. state of back road, tree across the river*

*since moving here this year, I have found the community very welcoming and helpful*

*I cannot read and do not use social media so cannot easily access the council/company or know what they are doing*

*There seems to be a core group of hard working volunteers who are involved in many community activities, and an equally committed audience, but sadly there are many others who do not get involved in either way*

*Clearer long term view of how the area may look in future with housing, business, opportunities, leisure, shops (for essentials), it's a beautiful place to be, but can you sustain living here?*

*I think it is a disgrace thinking of knocking down our village hall, and the school buildings, surgery and old folks home.*

*more full time work*

*We have very few employers and jobs to encourage people here and too few houses for those who do want to come here to work*

*I feel i don't know people. They are in their houses. I walk around with my dog, meet the children who are friendly and courteous. But the 'grown ups' are not out and about. Shop and library are very important to me. De tha dol is good at getting the word out/ I feel the use of the internet, particularly facebook, is not useful, possible harmful/detrimental to keeping us all connected and informed. I feel alienated by it's use. Possibly my age, but also my experience. Notice boards not good. I would like to know more people, not just well heeled incomers. Acharacle, where I used to live, was more well mixed. I worry about the impact of a fixed link in ardour. Hope it doesn't materialise*

*I think places like sunart can be ruined very easily by changing things and development. Look at Skye, NC500 most people live here because of what it is and it's too easy to ruin places by greed and change*

*Please have to have the mindset to be part of a community. You cannot just come and try and change people. A lot of people here more are comfortably well off and do not need a community sadly. Many are retired, we need to return the youth and promote work and the community. You cannot make a new pot out of broken tired bits and pieces*

*Ferry replacement plans are highly restrictive, repeating the mistakes/ideas of the last replacement. Time to move to a permanent link rather than another ferry - producing power (turbines) and excellent access for residents*

*There have been clear examples of the personal interests of some individuals on Sunart Community Council taking precedence over community interests*

*Some individuals in sunart community council put personal interests before those of the community*

*Sunart community company - i feel sometimes heard, sometimes ignored, sometimes problems are exacerbated.*

*Sunart Community COuncils immediate help for prescription delivery, isolated people in covid restrictions was amazing.*

*There simply isn't anywhere to live. major issue.*

*Dalmhor buildings and village hall dragging on for too long. Action not talking is now overdue.*

*It often falls to the same proactive people to pull together for the community. Still difficult to find help to run charities, communities etc considering proportion of retired people in the area. The two incomes in our family rely on tourism and the rapidly rising costs of the ferry is stifling growth in this area. Another restriction to expansion is the fact that fort william is so heavily marketed as a holiday destination. Which leaves us constantly in their shadow and not in receipt of the promotion we deserve as a wonderful alternative.*

*Left Blank*

*Shared working spaces would be great*

*The lack of housing, and the lack of housing available without going 70k over the price. The housing that has been built serves only one section of the local demographic. We need housing for larger families and those that want to have animals (we're rural after Al.*

*Sunart is very good at community projects and ownership and it would be great to see that grow. A word of caution however, future development needs to be careful not to over develop or destroy what people love about living here. It is unique and special and doing too much might make it just like anywhere else.*

*Ensure crofting and agriculture can continue and that development is mindful of this. Not too much development, I still want it to feel like a rural place.*

*More jobs*

*As mentioned previously, I have massive concerns about housing. There is hardly any affordable housing for first time buyers/young people, therefore discouraging them from moving here. There are also hardly any 'mid' priced housing for the average family.*

*We would just like to thank the people of Strontian and Longrigg Road for making us so welcome. We are embarrassed not to be there full time as yet due to children finishing exam years in school and worry that we are seen to be not taking a fuller part in the community as yet. We plan to be there permanently over the next few years and very much look forward to taking part more in the community. It is so great to see such a proactive forward looking community.*

*As we do not live full time but may retire here my greatest concern is the distance away from hospital, medical facilities. The community has a lot going on and a place I would love to live full time and become more involved.*

*Is there a contingency plan for the post office and petrol station once Douglas retires?*

*Stop the rising costs of travel on the ferry*

*Sunart will grow and develop with a view to attracting more young families and new businesses*

*Not enough affordable housing*

*I feel this is a very special, unique place to live and would hate it to become more like some places ie. Skye where tourism reigns supreme at the cost of local communities and real people. It's important to incentivise young people and families to create their own place within the area. With so many businesses run via the internet it is no longer necessary to be 'in the office' . So Broadband and the internet is very important.*

*Development should not damage the qualities for which people choose to live here*

*It is a beautiful place. Don't spoil it with minority community priorities.*

*Bridging the gap between leaving school and moving into the area to start a business later in life, needs addressing. There seem to be very few 18-30 year-olds living successfully in the area.*

*A bridge to replace the ferry please*

*Cycle/footpaths both from the bridge by Anaheilt to Scotstown and also along the A861 to Longrigg*

*The wonderful trees growing in Phemie's wood and the Fairy Walk would be enhanced with plaques informing folk about the specific tree they are looking at.*

*sustainability / environmental issues need to be front and centre, greater inclusivity / diversity / awareness and visibility for LGBTQ+ / more opportunities for young people.*

*Reduce litter including better efforts from fish farms on marine litter which is a big issue here. More environmental awareness. Improved LGBTQ+ / diversity awareness and representation*

*We need more: LGBTQ+ spaces / representation, more obvious diversity (because it is here), a reduction in litter, a stronger emphasis on environmental issues.*

*Keep jobs local as much as possible*

*This survey has covered all the worries residents are facing, thank you. Some answers to those issues are modern, feasible. With the cost of living crisis, remote places are left and feel they are left on their own, happening in other countries too.*

*Housing and jobs! Unless we make it easier for people to stay here, live here and work here, the population will shift to mostly retired people moving in (which I have no problem with but isn't sustainable). Better public transport for young people, and more affordable housing/private renting opportunities*